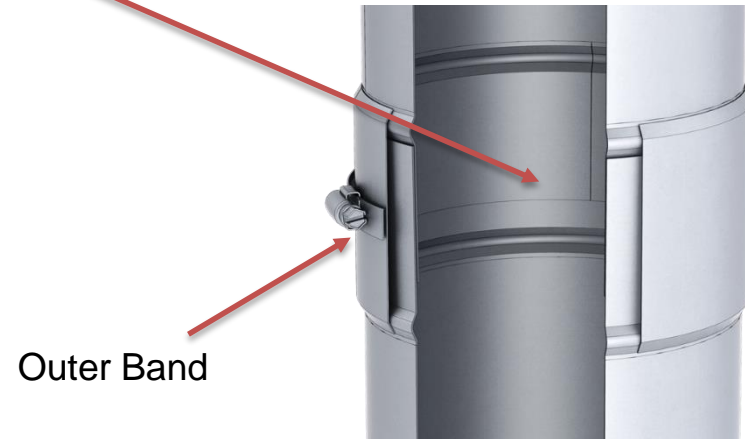
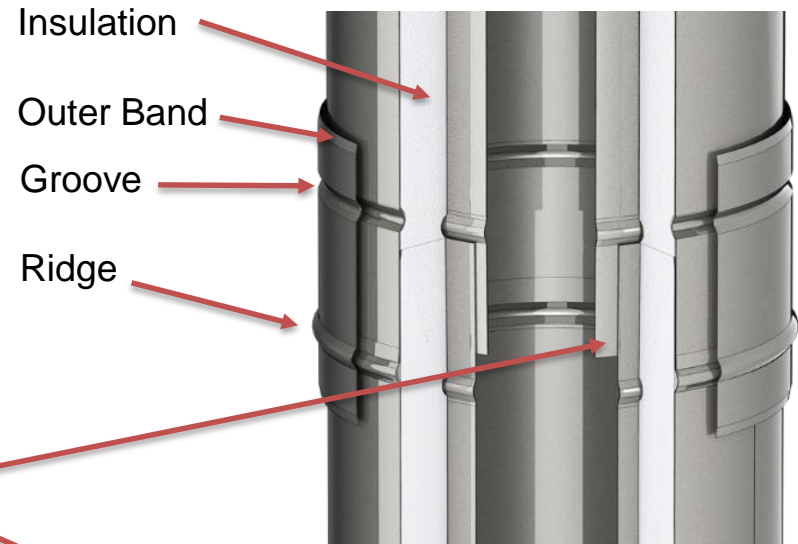


Installation

Jeremias Model DWKL and SWKL

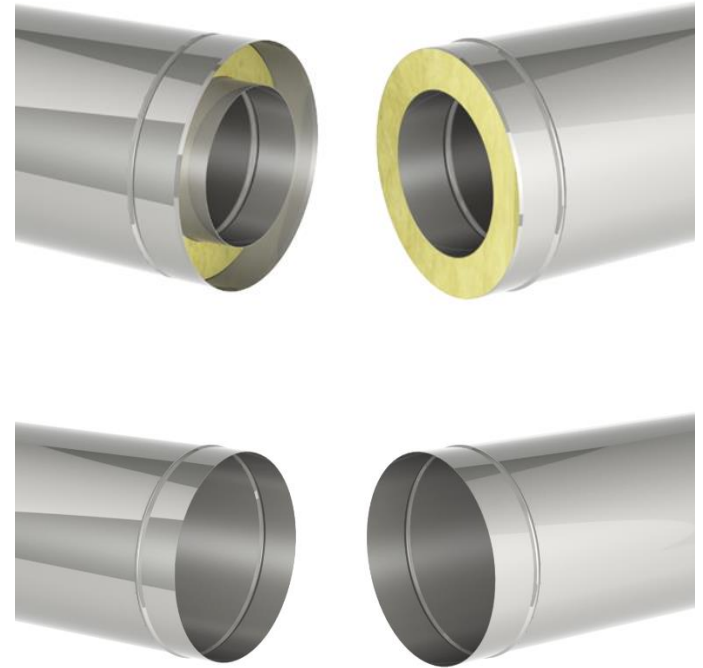
- Cutaway view of the joints after joining
 - **DWKL** double wall
 - **SWKL** single wall
- Conical joint design, high pressure capable (90" WC), no silicone sealant (steel to steel)
2.2" of surface area at each joint



Installation

Jeremias Model DWKL and SWKL

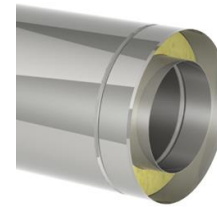
- Close up view of the joints before joining
 - **DWKL** double wall
 - **SWKL** single wall
- Conical joint design, high pressure capable (90" WC), no silicone sealant (steel to steel)



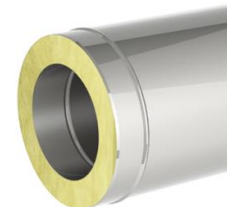
Installation

Jeremias Model DWKL and SWKL

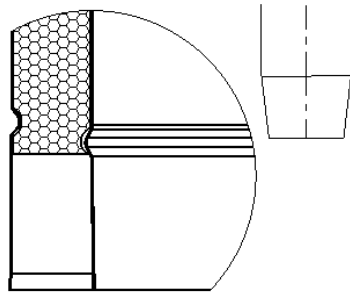
Let's start with the **DWKL** double wall. The single wall will then need no further explanation.



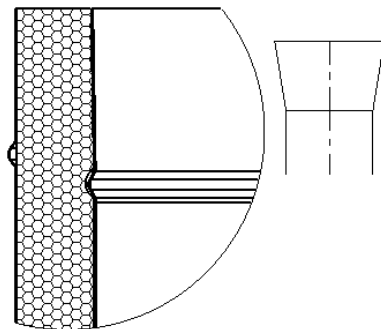
Male end



Female end

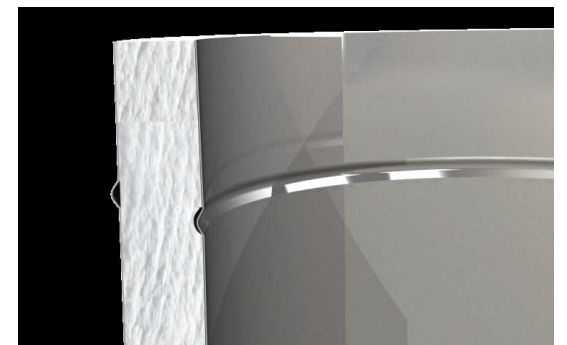
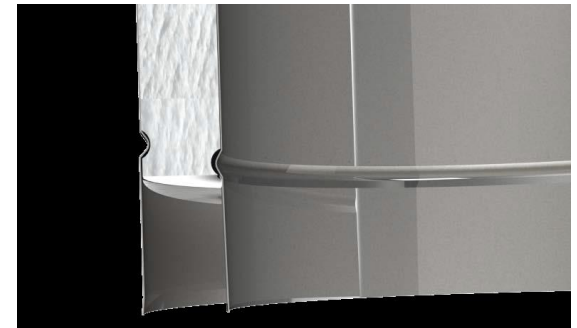


Male end – inner wall



Female end- inner wall

A Closeup Cross-section of the Jeremias Model DWKL shows the male and female ends of the conical joint design.



Installation

Jeremias Model DWKL

Required Tools:

- KL Paste
- Screwdriver
- Board
- 3 Lb SledgeHammer
- Male unit and female unit to be assembled



Installation

Jeremias Model DWKL

Notice- Flow Arrow –

This shows the flue gas flow direction, and will stay consistent during the entire venting route.



Installation

Jeremias Model DWKL

Clean the inside of the female joint connection



Installation

Jeremias Model DWKL

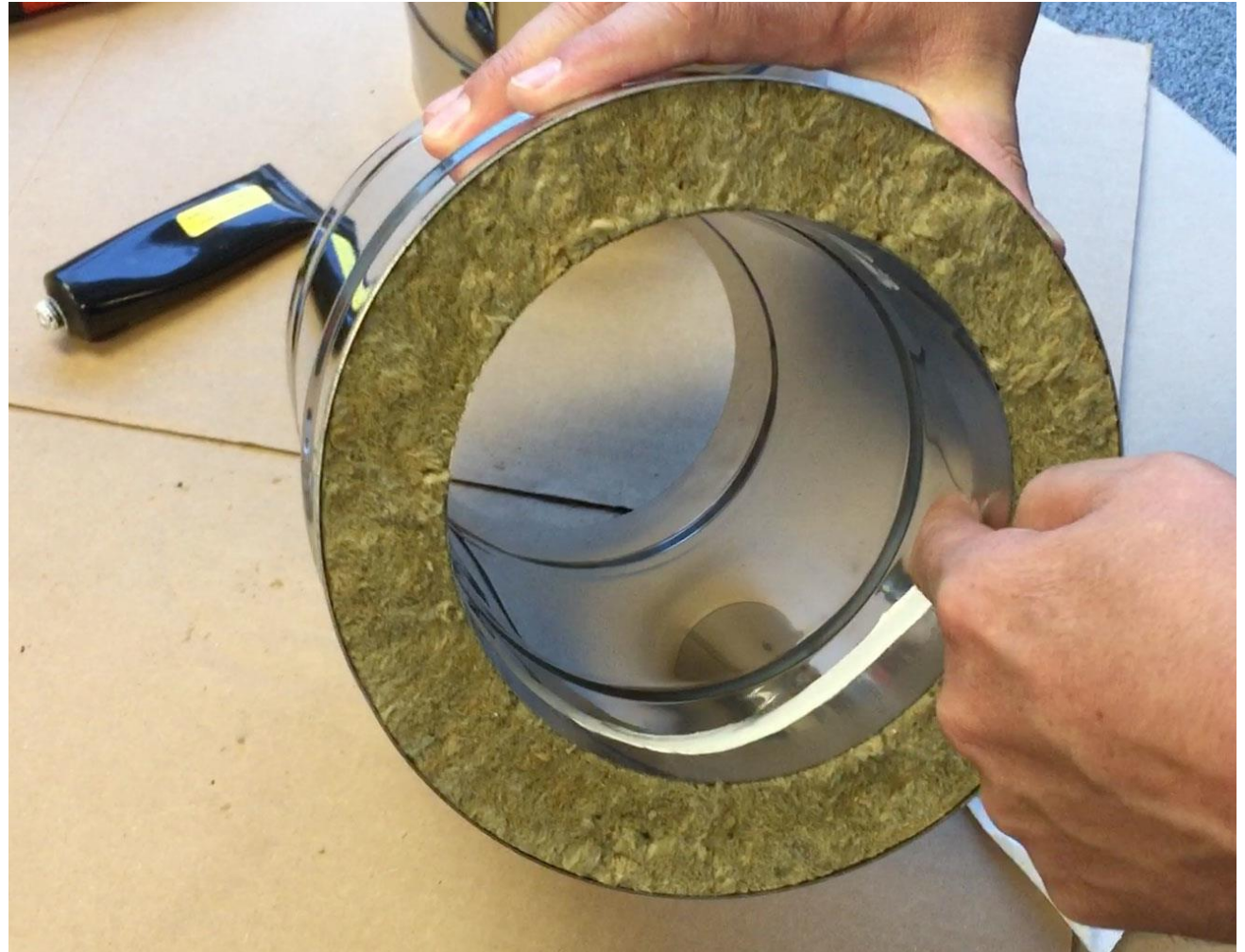
Clean the outside of the male joint connection



Installation

Jeremias Model DWKL

Apply KL Paste to inside
of female joint
connection



Installation

Jeremias Model DWKL

Proper amount of KL
Paste applied to inside of
female joint connection.

KL Paste is a lubricant
that enables the parts to
slide together easier. It
also contains microscopic
ceramic beads that melt
and seal the joints better.



Installation

Jeremias Model DWKL

Carefully place next piece in place – align carefully and gently slide into position...



Installation

Jeremias Model DWKL

Once in place, press down until there is firm resistance. There should be about 1/4" to 5/8" of space left at the joint



Installation

Jeremias Model DWKL

Next, place the Wooden Board over the top of the top piece and tap firmly into place with the hammer until there is no space left at the joint



Installation

Jeremias Model DWKL

The proper connection is made when there is no space left at the joint



Installation

Jeremias Model DWKL

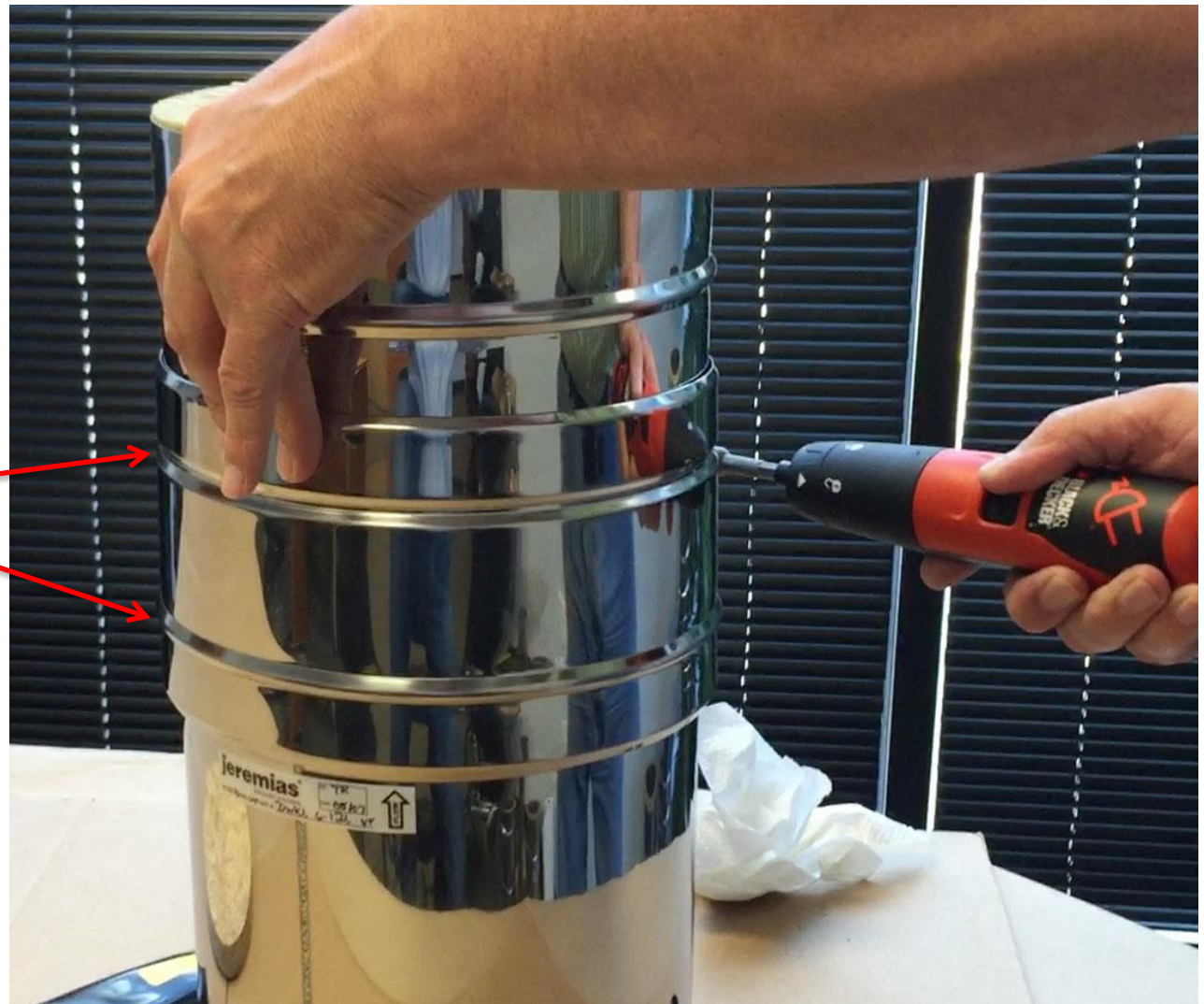
Make sure that the inner liner protrudes only about 1/8" above the insulation



Installation

Jeremias Model DWKL

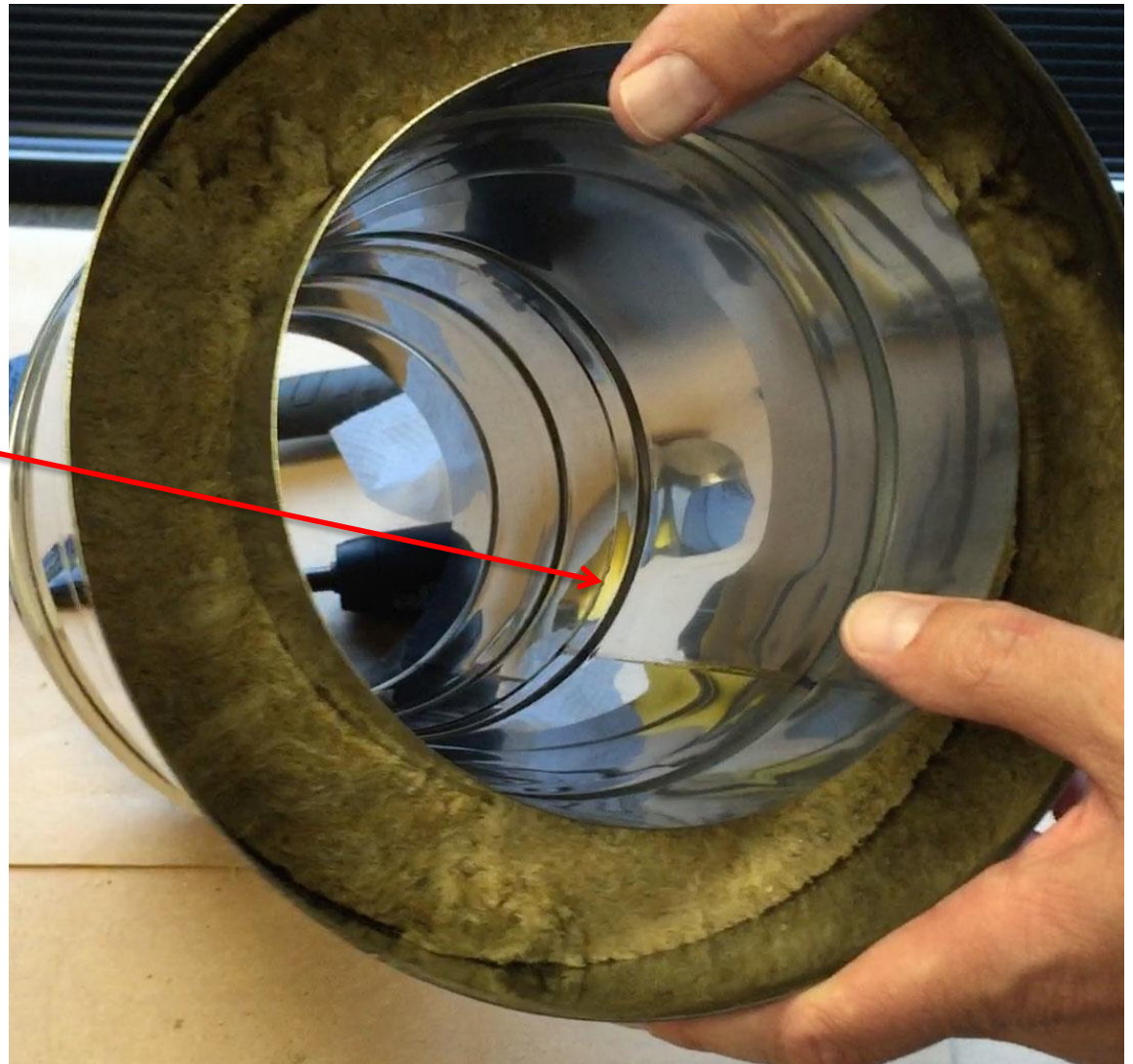
Move the Outer Band into position and tighten down with the screwdriver. Note that the band can only go on one way- the groove is on top and the ridge is on the bottom. The band will cover the joint at the top and bottom.



Installation

Jeremias Model DWKL

If you look on the inside, you will see that the KL Paste has been squeezed out in a little bead, showing you how tight that joint really is...



Installation

Jeremias Model DWKL

The finished joint of these two pieces – shows you how quickly and easily you can assemble this beautiful product

