



## SWFL

Single Wall Flanged Joining Pipe & Fittings

Ø6" - Ø36"

[www.jeremiasinc.com](http://www.jeremiasinc.com)



# JEREMIAS CONTENTS



## SWFL Single Wall Joining Pipe & Fittings

<b>Introduction</b>	3 - 4
<b>Technical specifications</b>	5 - 7
<b>SWFL Products</b>	8 - 54
Adapters	8
Supports	11
Straight lengths	17
Adjustable lengths	21
Elbows	22
Tees	25
Increasesers / Reducers	34
Tee caps	35
Flashings	37
Terminations	42
Accessories	49
Notes	55

An offset calculator for all Jeremias products can be found on the Jeremias website under Downloads/Product data sheets and catalogs

# JEREMIAS EXHAUST SYSTEMS

Model SWFL is the fusion of world class SWKL (conical) with USA flanged pressure stack systems. SWFL may be intermixed in the same stack, chimney, grease duct or vent system with other Jeremias products.

Model SWFL is intended for use in connecting heating and hot water appliances, engines, and turbines to the outdoors. There are also many other applications and uses including, but not limited to the following: Chimney Liners, Chutes, Dryer Vents, Fume Venting, Industrial Oven and Process Stacks, Incinerator Exhausts, Paint Booth Exhausts, Particle Conveying, and Ventilation Ducts.



## STRONG – OPEN – INTERNATIONAL

### 40 Years of Experience

Jeremias is one of the world's leading manufacturers of flue and chimney systems for the exhaust of gases and ventilation, covering all kinds of domestic, commercial and industrial applications. Jeremias Group product range includes over fifty (50) different CE or UL certified systems covering commercial and domestic applications complimented by freestanding Industrial steel chimneys up to 10 feet in diameter. Jeremias offers its clients a wide range of high quality products, technical support for projects, and stack sizing software.

With over 40 years of experience in the venting and component exhaust industries, Jeremias has seven (7) manufacturing plants in six (6) different countries worldwide. Jeremias today has more than 1,000 employees and is proud of its German engineering origins, and is now also manufactured in the USA from 100% local materials!

# JEREMIAS EXHAUST SYSTEMS

## Research and Development

Jeremias has over fifty (50) CE Certified exhaust and chimney systems worldwide for domestic, commercial, and industrial applications. “CE Certification” is the mandatory conformity safety testing for products sold throughout Europe and other parts of the world. In North America, Jeremias employs only Underwriters’ Laboratories (UL) for testing, certifications, and listings to all applicable UL and ULC Standards.

Opened in 2013, the Jeremias R&D Lab in Logan, OH has the industry’s most experienced lab technicians on staff and incorporates the latest equipment and technologies. This laboratory enables Jeremias to provide industry leadership with a continued focus on new factory-built exhaust applications and unique listings. Jeremias is constantly bringing new innovations to the marketplace and our Logan laboratory enables us to accomplish these changes quickly and effectively.

## All Stainless Steel Construction

Jeremias incorporates the finest stainless steel grades required by each individual application for our exhaust systems. These steels are carefully chosen according to the specific needs for each UL Listing. These steels incorporate various advantages over others including resistance to corrosion, heat expansion, forming, welding, and lower work hardening, among other factors. All Jeremias accessories (including support plates and angle rings) are also made of stainless steel. This means that there is no rusting of materials in any outdoor applications, and no cross contamination in the factory from carbon steel cutting or welding. Jeremias cleans all external welds to assure the customer clearly sees the quality standard that we are setting. Jeremias backs our exhaust systems with a Twenty-Five (25) Year Standard Warranty.

## Easiest Install, Yet most Reliable Flanged System

Model SWFL is a cylindrical, factory-built, modular venting systems that incorporate a 1.25” steel overlap with added vee band for easiest assembly.

SWFL is the only flanged pressure stack systems with a continuous overlapping inner, as the flange is added to the outside of the inner liner. This is important, because the male end extends completely through and past the actual joint into the female end. On the inside, the joint is smooth and anything liquid flows downhill past the joint with no interference. This male extension protects the joint and provides a stable connection which holds the two pipe ends together so that the flanges can be connected and sealed on the outside of the inner liner without slipping apart during assembly. Once assembled, a strong, liquid-tight seal is completed and protected by 1.25 inches of steel overlap from damage like corrosion from condensate, grease, pressure, or cleaning fluids.

SWFL is the most rugged and easiest stack systems to install, yet still the most reliable as the inner overlap protects the silicone seal against condensate and high-pressure washings in commercial kitchen exhaust.

# TECHNICAL SPECIFICATIONS

## Underwriters Laboratories Listings

UL File Number for All Listings: MH59917

### United States:

#### SWFL Single Wall

1. UL 103 Standard, Building Heating Appliance Chimney
2. UL 103 Standard, Additional Positive Pressure Listing to 90" WC
3. UL 1978 Standard, Grease Duct
4. UL 1738 Standard, Venting Systems for Gas-Burning Appliances, Categories II, III and IV
5. UL 1777 Standard, Chimney Liners

### Canada:

#### SWFL Single Wall

1. ULC S662 Standard for Factory-Built Grease Ducts
2. ULC S636 Standard for Type BH Gas Venting Systems
3. ULC S635 Standard for Lining Systems for Chimneys



## Operating Pressures

All Jeremias Inc. SWFL has been evaluated and Listed by UL for positive pressures up to 90" W.C. internal static pressure with exposure up to 1400°F internal continuous temperatures.

## Model and Part Identifications



**SWFL**  
Single Wall Flanged  
Connection

Part numbers include the Model, diameter, item code, then variation (if any).

- > Example 1: SWFL8-36L for an 8 inch diameter Model SWFL single wall 36 inch length of pipe
- > Example 2: SWFL20-45EL for a 20 inch diameter Model SWFL double wall 45° Elbow
- > Example 3: SWFL36-48L for a 36 inch inner diameter Model SWFL single wall 48" Length.

## Material Options and Thicknesses

### SWFL:

- > 0.035" thick Type 444 stainless steel

# TECHNICAL SPECIFICATIONS

## Code and Standards

When installed per their instructions, all Jeremias Inc. SWFL is code compliant with the following codes and standards:

- > NFPA 31      > NFPA 96      > ULC S650      > IMC
- > NFPA 37      > NFPA 211      > CSA B139      > IFGC
- > NFPA 54      > UMC              > CSA B149      > CMC

The following agencies or associations produce codes, standards, or guidelines by which all Jeremias Inc. Models may be installed and used:

- > ASHRAE (American Society of Heating, Refrigerating and Air Conditioning Engineers)
- > CSA (Canadian Standards Association)
- > IAPMO (International Association of Plumbing and Mechanical Officials)
- > ICC (International Code Congress)
- > NFPA (National Fire Protection Association)
- > UL (Underwriters Laboratories, Inc.)
- > ULC (Underwriters' Laboratories of Canada)

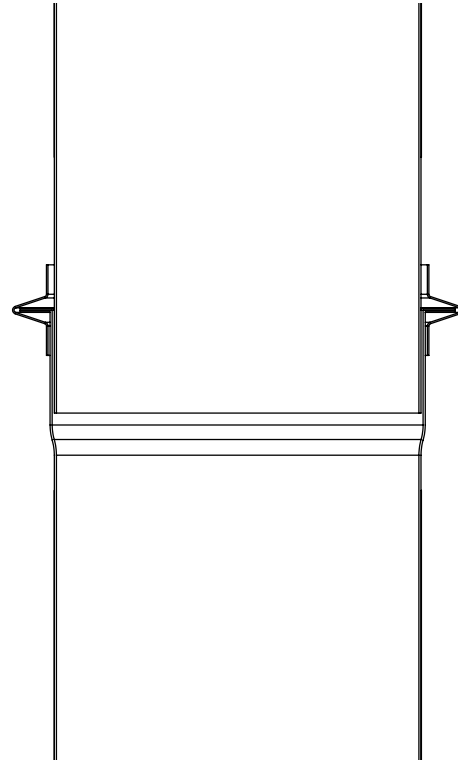
## Operating Temperatures

CRITERIA	PERMITTED TEMPERATURES
UL 103 Building Heating Appliance Chimney ULC/ORD-C959 Industrial Type 540°C Chimney	1000°F (540°C) Continuous 1400°F (760°C) Intermittent
Additional UL 103 Type HT	2100°F (1150°C) for 10 Minutes
UL 2561 1400°F Chimney ULC/ORD-C959 Industrial Type 760°C Chimney	1400°F (760°C) Continuous 1800°F (980°C) Intermittent
UL 1978 Grease Duct ULC S662 Standard for Factory-Built Grease Ducts	500°F (260°C) Continuous 2000°F (1093°C) for 30 Minutes
UL 1738 Special Gas Vent ULC S636 Gas Vent	550°F (288°C) Continuous
Optional 400°F UL 1738 Special Gas Vent	400°F (204°C) Continuous
Optional Plastic Applications UL 1738 Special Gas Vent	148°F (64°C) Continuous for PVC 194°F (90°C) Continuous for CPVC 248°F (120°C) Continuous for PP
UL 441 Gas Vents, ULC S605 Gas Vents	480°F (249°C) Continuous
UL 641 Type L Vent ULC S609 Vents Type L	570°F (300°C) Continuous
UL 1777 Chimney Liner ULC S635 Lining Systems for Existing Chimneys	UL 1777: 570°F Continuous ULC S635: 650°C Continuous

## Joint Detail

Jeremias Inc. SWFL is a cylindrical, factory-built, modular venting system that incorporate an extended inner that self-aligns and a 1/2" flange / vee band system for quick and easy assembly in the field. A Jeremias supplied high temperature sealant is applied to the vee band groove to create a seal. This vee band is protected by the above mentioned inner extension.

Model SWFL Joint Assembly Detail



Further features of Jeremias single wall systems include:

- a) No field welding
- b) All stainless steel construction
- c) Smooth flowing inner liner compared to welded steel
- d) Wide array of accessories such as supports and drains
- e) May be interconnected with the double wall models

## Sizing/Pressure Calculations

Jeremias' engineering uses its own software based upon the "Chimney, Gas Vent, and Fireplace Systems" chapter of the ASHRAE Handbook to assure that the exhaust and chimney system is sized in accordance with the appliance manufacturers' installation instructions.

# TECHNICAL SPECIFICATIONS

## Pipe Weight per Foot

The approximate installed weight of the SWFL exhaust system can be found using this table. This table does not include accessories such as supports and guides, nor shipping packaging or palletizing weight.

### Pipe Weight in Lbs. per Foot:

Jeremias can also provide submittals that show all required accessories, including drains, supports etc., to be in accordance with any specific appliance manufacturers' installation instructions.

Ø	SWFL
6"	2.5
7"	2.9
8"	3.4
9"	3.8
10"	4.2
11"	4.6
12"	5.0
13"	5.4
14"	5.8
16"	6.7
18"	7.5
20"	8.3
22"	9.2
24"	10.0
26"	10.8
28"	11.7
30"	12.5
32"	13.3
34"	14.2
36"	15.0

## Sealant and Usage

Jeremias also provides two options for sealants based upon temperature of the flue gases:

J-2000 Sealant, for temperatures up to 2000°F. Use for caulking/sealing V-bands and flange surfaces within this temperature range.

J-600 Sealant, for temperatures up to 600°F. Use for caulking/sealing V-bands and flange surfaces within this temperature range.

### Sealant Usage Chart:

Shows expected number of joints sealed per tube.

Ø	# of Joints
6"	10
8" - 10"	9
11" - 12"	8
13" - 16"	7
18" - 20"	6
22" - 24"	5
26" - 28"	4
30" - 32"	3
34" - 36"	2

## Joint Assembly

The Jeremias single wall model joint system is designed for a quick and easy installation. Follow Steps 1 through 3 for general pipe and fittings assembly.

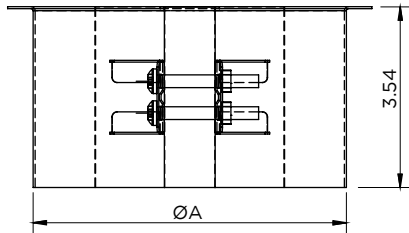


### Step 1:

Apply sealant to flange surface. Join flanges together. Apply sealant to the inner groove of the V-Band. Position V-Band around the flanges and tighten screws on V-Band.

# ADAPTERS

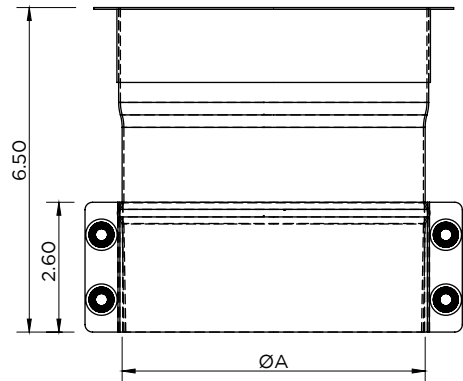
Raw Collar Outside Adapter / SWFLØ-RCO



Ø	ØA
6	6
7	7
8	8
9	9
10	10
11	11
12	12
13	13
14	14
16	16
18	18
20	20
22	22
24	24
26	26
28	28
30	30
32	32
34	34
36	36

Includes Locking Band with Latch Clamp

Raw Collar Inside Adapter / SWFLØ-RCI



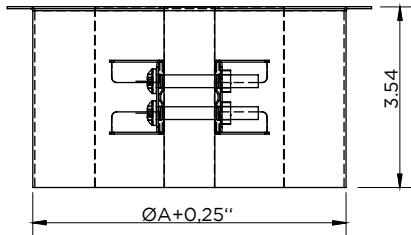
Ø	ØA
6	6
7	7
8	8
9	9
10	10
11	11
12	12
13	13
14	14
16	16
18	18
20	20
22	22
24	24
26	26
28	28
30	30
32	32
34	34
36	36

Includes Locking Band with Latch Clamp



# ADAPTERS

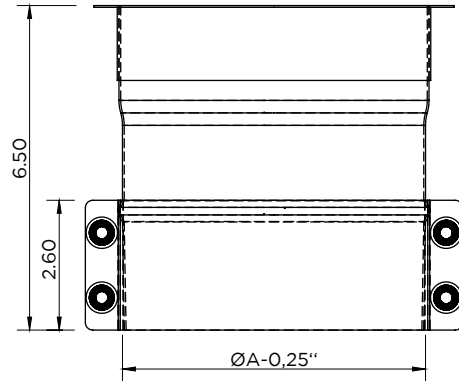
Raw Collar Outside Adapter-Large / SWFLØ-RCO-LG



Ø	ØA
6	6
7	7
8	8
9	9
10	10
11	11
12	12
13	13
14	14
16	16
18	18
20	20
22	22
24	24
26	26
28	28
30	30
32	32
34	34
36	36

Includes Locking Band with Latch Clamp

Raw Collar Inside Adapter-Small / SWFLØ-RCI-SM

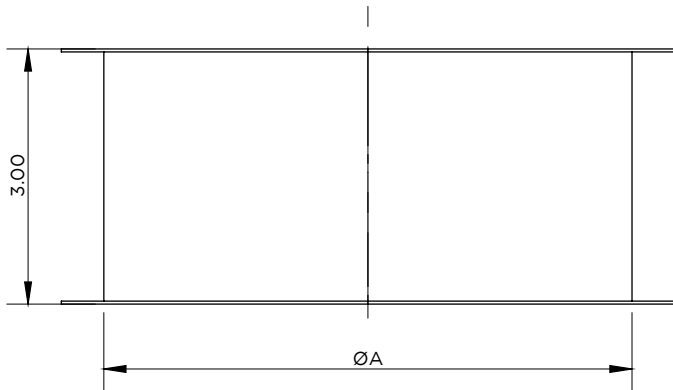


Ø	ØA
6	6
7	7
8	8
9	9
10	10
11	11
12	12
13	13
14	14
16	16
18	18
20	20
22	22
24	24
26	26
28	28
30	30
32	32
34	34
36	36

Includes Locking Band with Latch Clamp

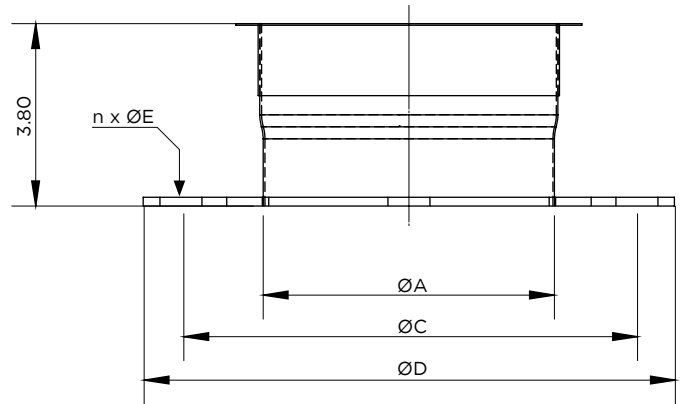
# ADAPTERS

Flange Collar Adapter / SWFLØ-FC



Ø	ØA
6	6
7	7
8	8
9	9
10	10
11	11
12	12
13	13
14	14
16	16
18	18
20	20
22	22
24	24
26	26
28	28
30	30
32	32
34	34
36	36

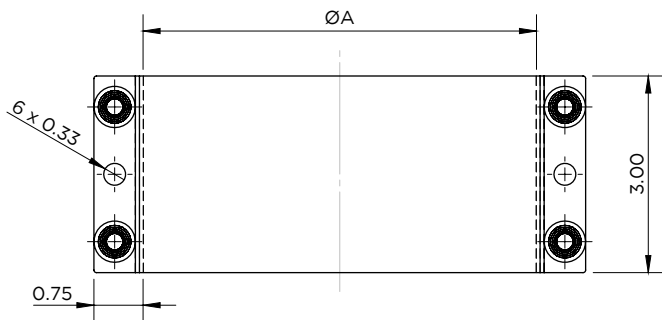
125/150 Lb. ANSI Flange / SWFLØ-AF



Ø	ØA	ØC	ØD	ØE
6	6	9.5	11.07	0.87
7	7	11.75	13.5	0.87
8	8	11.75	13.5	0.87
9	9	14.25	16	1
10	10	14.25	16	1
11	11	17	19	1
12	12	17	19	1
13	13	18.75	21	1.13
14	14	18.75	21	1.13
16	16	21.25	23.5	1.13
18	18	22.75	25	1.25
20	20	25	27.5	1.25
22	22	29.5	32	1.37
24	24	29.5	32	1.37
26	26	36	38.75	1.37
28	28	36	38.75	1.37
30	30	36	38.75	1.37
32	32	42.75	46	1.62
34	34	42.75	46	1.62
36	36	42.75	46	1.62

# SUPPORTS

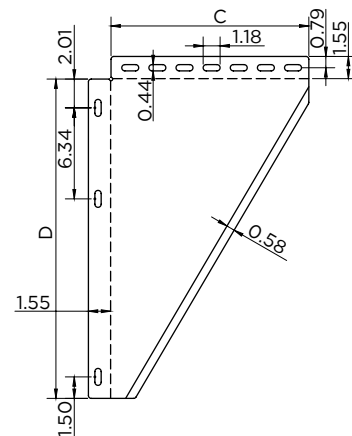
## Light Support Band / SWFLØ-LSB



Ø	B
6	6
7	7
8	8
9	9
10	10
11	11
12	12
13	13
14	14
16	16
18	18
20	20
22	22
24	24
26	26
28	28
30	30
32	32
34	34
36	36

Included bolts and nuts M6x20. Wire not included

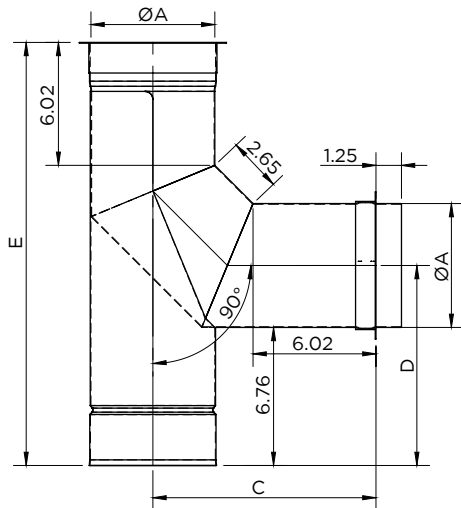
## Wall Brackets for Anchor Plate Support & Full Angle Ring / SWFLØ-WB



Ø	C	D
6	13.78	22.24
7	13.78	22.24
8	15.75	24.21
9	17.72	24.21
10	17.72	24.21
11	17.72	26.18
12	19.69	26.18
13	21.65	26.18
14	21.65	26.18
16	23.62	28.15
18	25.59	28.15
20	27.56	30.12
22	29.53	30.12
24	29.53	30.12
26	31.50	34.06
28	33.46	36.02
30	35.43	37.99
32	37.40	39.96
34	39.37	41.93
36	41.34	43.90

# SUPPORTS

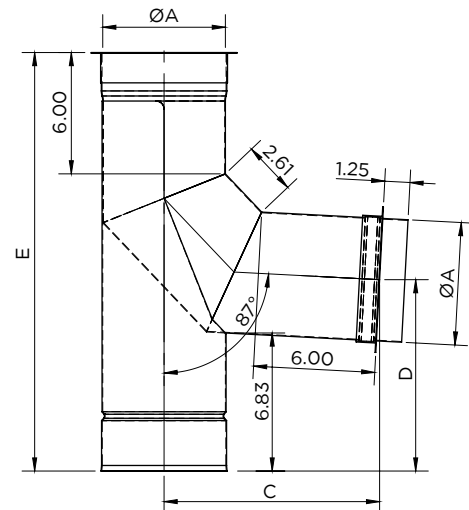
Elbow 90° with support leg / SWFLØ-90ES



Ø	ØA	C	D	E
6	6	10.93	9.8	20.73
7	7	11.43	10.3	21.73
8	8	11.93	10.8	22.73
9	9	12.43	11.3	23.73
10	10	12.93	11.8	24.73
11	11	13.43	12.3	25.73
12	12	13.93	12.8	26.73
13	13	14.43	13.3	27.73
14	14	14.93	13.8	28.73
16	16	15.93	14.8	30.73
18	18	16.93	15.8	32.73
20	20	17.93	16.8	34.73
22	22	18.93	17.8	36.73
24	24	19.93	18.8	38.73

Works with SBP

Elbow 87° with support leg / SWFLØ-87ES

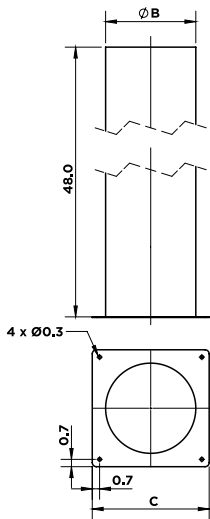


Ø	ØA	C	D	E
6	6	10.67	9.47	20.71
7	7	11.14	9.97	21.72
8	8	11.62	10.48	22.72
9	9	12.09	10.98	23.72
10	10	12.56	11.48	24.72
11	11	13.04	11.98	25.72
12	12	13.51	12.48	26.72
13	13	13.99	12.99	27.72
14	14	14.46	13.49	28.73
16	16	15.41	14.49	30.73
18	18	16.35	15.5	32.73
20	20	17.3	16.5	34.74
22	22	18.25	17.5	36.74
24	24	19.2	18.51	38.74

Works with SBP

# SUPPORTS

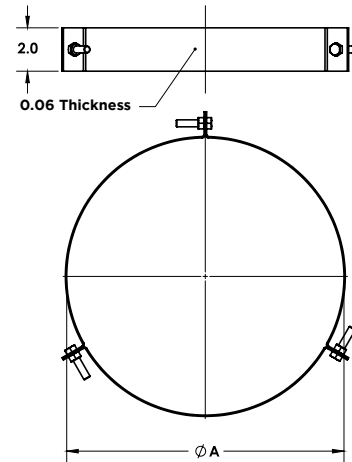
## Support Base Plate / SWFLØ-SBP



Cut to fit height needed

Ø	B	C
6	8.5	11.16
7	9.5	12.16
8	10.5	13.16
9	11.5	14.16
10	12.5	15.16
11	13.5	16.16
12	14.5	17.16
13	15.5	18.16
14	16.5	19.16
16	18.5	21.16
18	20.5	23.16
20	22.5	25.16
22	24.5	27.16
24	26.5	29.16
26	28.5	31.16
28	30.5	33.16
30	32.5	35.16
32	34.5	37.16
34	36.5	39.16
36	38.5	41.16

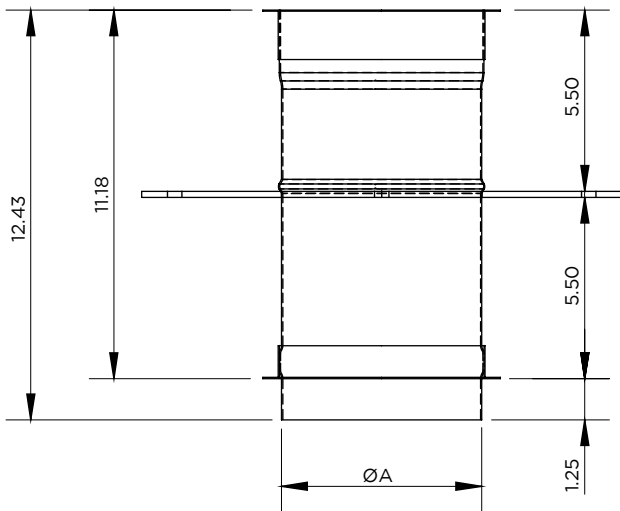
## Guy Wires Band / SWKLØ-GWB



Ø	A
6	8.5
7	9.5
8	10.5
9	11.5
10	12.5
11	13.5
12	14.5
13	15.5
14	16.5
16	18.5
18	20.5
20	22.5
22	24.5
24	26.5
26	28.5
28	30.5
30	32.5
32	34.5
34	36.5
36	38.5

# SUPPORTS

Anchor Plate Support / SWFLØ-APS



$\varnothing$	$\varnothing A$
6	6
7	7
8	8
9	9
10	10
11	11
12	12
13	13
14	14
16	16
18	18
20	20
22	22
24	24
26	26
28	28
30	30
32	32
34	34
36	36

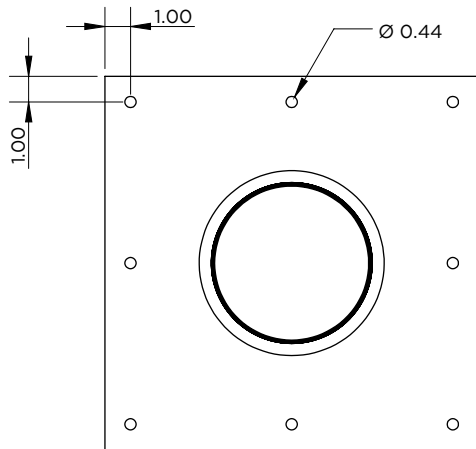
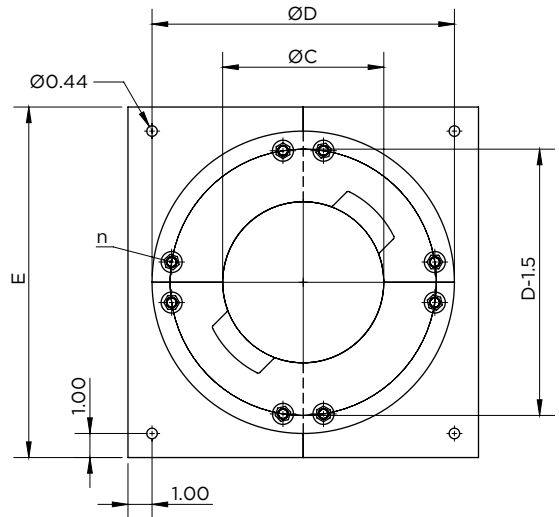
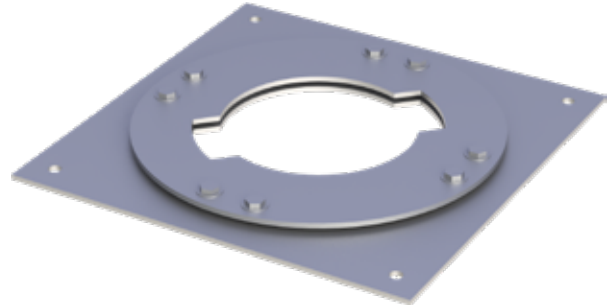


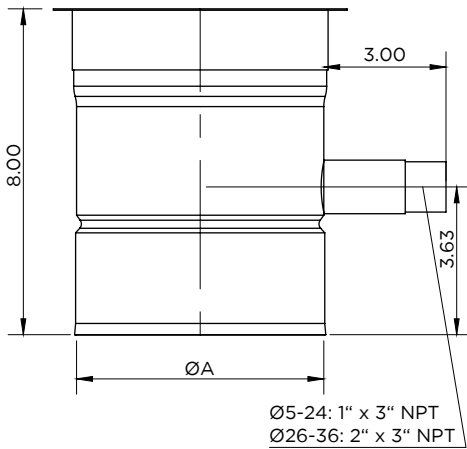
Plate Support / SWFLØ-PS



$\varnothing$	$\varnothing C$	$\varnothing D$	$E$
6	6.7	12.56	14.56
7	7.7	13.56	15.56
8	8.7	14.56	16.56
9	9.7	15.56	17.56
10	10.7	16.56	18.56
11	11.7	17.56	19.56
12	12.7	17.56	20.56
13	13.7	19.56	21.56
14	14.7	20.56	22.56
16	16.7	22.56	24.56
18	18.7	24.56	26.56
20	20.7	26.56	28.56
22	22.7	28.56	30.56
24	24.7	30.56	32.56
26	26.7	32.56	34.56
28	28.7	34.56	36.56
30	30.7	36.56	38.56
32	32.7	38.56	40.56
34	34.7	40.56	42.56
36	36.7	42.56	44.56

# SUPPORTS

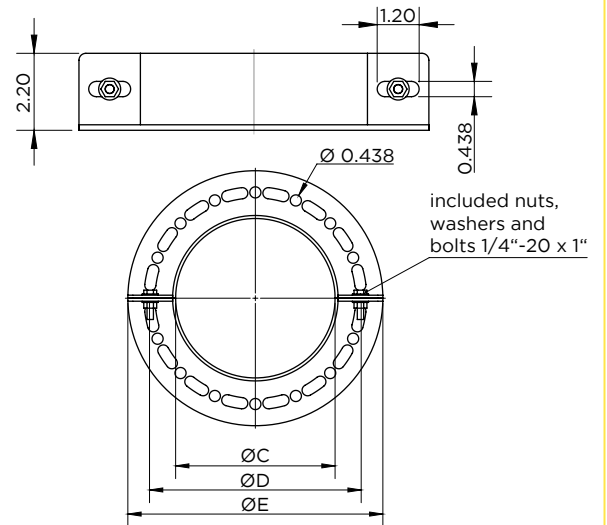
## Drain Tee Cap for support / SWFLØ-DCSS



Ø	ØA
6	6
7	7
8	8
9	9
10	10
11	11
12	12
13	13
14	14
16	16
18	18
20	20
22	22
24	24
26	26
28	28
30	30
32	32
34	34
36	36

Works with SBP. Includes Locking Band with gear Clamp

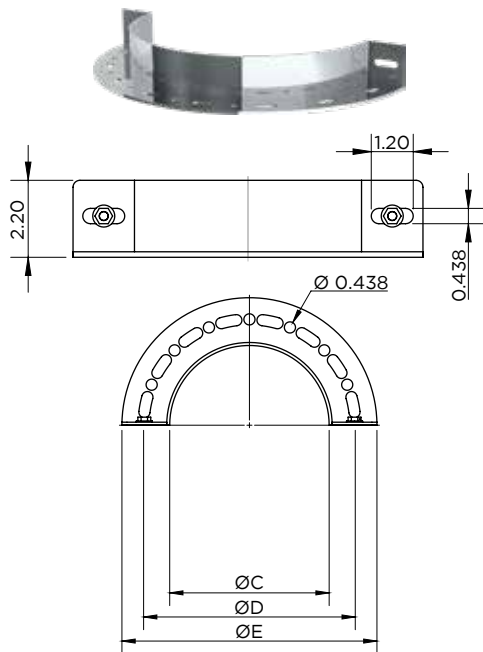
## Full Angle Ring / SWKLØ-FAR



Ø	A	C	D	E
6	6	6.25	8.30	10.00
7	7	7.25	9.30	11.00
8	8	8.25	10.30	12.00
9	9	9.25	11.30	13.00
10	10	10.25	12.30	14.00
11	11	11.25	13.30	15.00
12	12	12.25	14.30	16.00
13	13	13.25	15.30	17.00
14	14	14.25	16.30	18.00
16	16	16.25	18.30	20.00
18	18	18.25	20.30	22.00
20	20	20.25	22.30	24.00
22	22	22.25	24.30	26.00
24	24	24.25	26.30	28.00
26	26	26.25	28.30	30.00
28	28	28.25	30.30	32.00
30	30	30.25	32.30	34.00
32	32	32.25	34.30	36.00
34	34	34.25	36.30	38.00
36	36	36.25	38.30	40.00

# SUPPORTS

## Half Angle Ring / SWKLØ-HAR

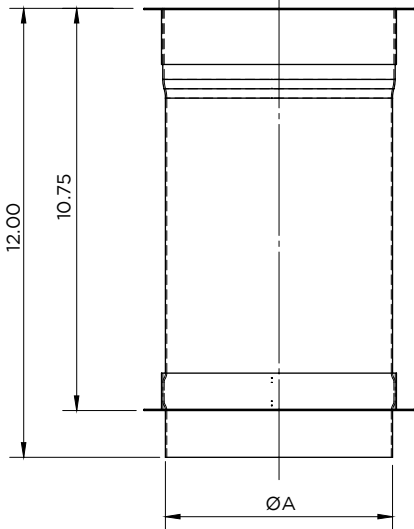


Ø	A	C	D	E
6	6	6.25	8.30	10.00
7	7	7.25	9.30	11.00
8	8	8.25	10.30	12.00
9	9	9.25	11.30	13.00
10	10	10.25	12.30	14.00
11	11	11.25	13.30	15.00
12	12	12.25	14.30	16.00
13	13	13.25	15.30	17.00
14	14	14.25	16.30	18.00
16	16	16.25	18.30	20.00
18	18	18.25	20.30	22.00
20	20	20.25	22.30	24.00
22	22	22.25	24.30	26.00
24	24	24.25	26.30	28.00
26	26	26.25	28.30	30.00
28	28	28.25	30.30	32.00
30	30	30.25	32.30	34.00
32	32	32.25	34.30	36.00
34	34	34.25	36.30	38.00
36	36	36.25	38.30	40.00



# STRAIGHT LENGTHS

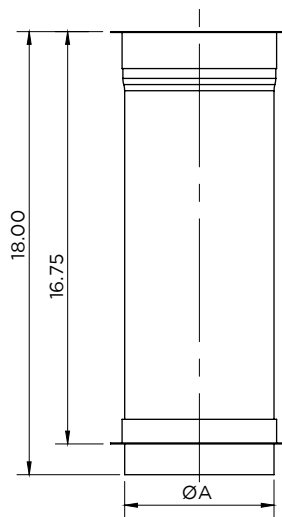
12" Fixed Length / SWFLØ-12L



Ø	ØA
6	6
7	7
8	8
9	9
10	10
11	11
12	12
13	13
14	14
16	16
18	18
20	20
22	22
24	24
26	26
28	28
30	30
32	32
34	34
36	36

\* - Installed lengths. Includes Locking Band with gear Clamp.

18" Fixed Length / SWFLØ-18L

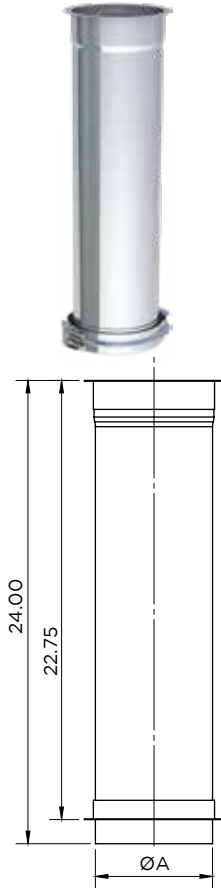


Ø	ØA
6	6
7	7
8	8
9	9
10	10
11	11
12	12
13	13
14	14
16	16
18	18
20	20
22	22
24	24
26	26
28	28
30	30
32	32
34	34
36	36

\* - Installed lengths. Includes Locking Band with gear Clamp.

# STRAIGHT LENGTHS

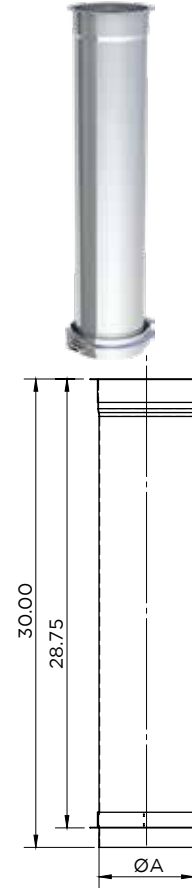
24" Fixed Length / SWFLØ-24L



Ø	ØA
6	6
7	7
8	8
9	9
10	10
11	11
12	12
13	13
14	14
16	16
18	18
20	20
22	22
24	24
26	26
28	28
30	30
32	32
34	34
36	36

\* - Installed lengths. Includes Locking Band with gear Clamp.

30" Fixed Length / SWFLØ-30L

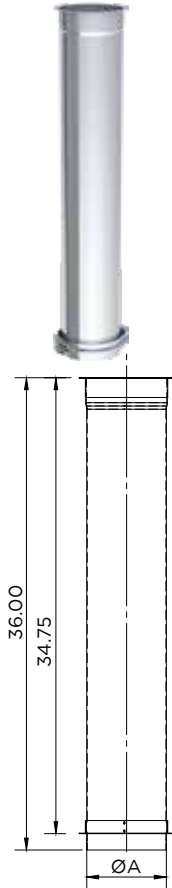


Ø	ØA
6	6
7	7
8	8
9	9
10	10
11	11
12	12
13	13
14	14
16	16
18	18
20	20
22	22
24	24
26	26
28	28
30	30
32	32
34	34
36	36

\* - Installed lengths. Includes Locking Band with gear Clamp.

# STRAIGHT LENGTHS

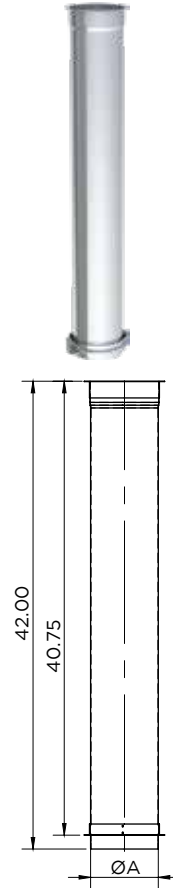
36" Fixed Length / SWFLØ-36L



Ø	ØA
6	6
7	7
8	8
9	9
10	10
11	11
12	12
13	13
14	14
16	16
18	18
20	20
22	22
24	24
26	26
28	28
30	30
32	32
34	34
36	36

\* - Installed lengths. Includes Locking Band with gear Clamp.

42" Fixed Length / SWFLØ-42L

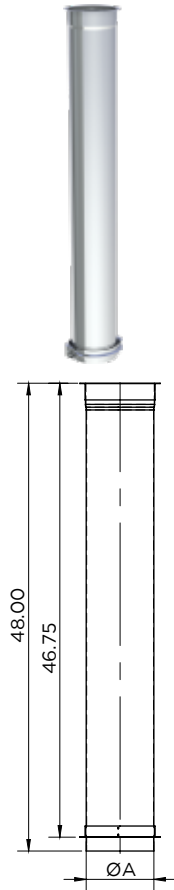


Ø	ØA
6	6
7	7
8	8
9	9
10	10
11	11
12	12
13	13
14	14
16	16
18	18
20	20
22	22
24	24
26	26
28	28
30	30
32	32
34	34
36	36

\* - Installed lengths. Includes Locking Band with gear Clamp.

# STRAIGHT LENGTHS

## 48" Fixed Length / SWFLØ-48L

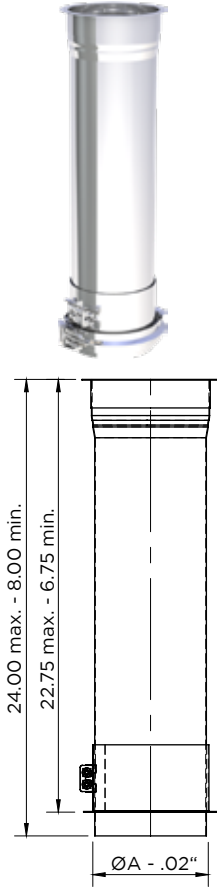


Ø	ØA
6	6
7	7
8	8
9	9
10	10
11	11
12	12
13	13
14	14
16	16
18	18
20	20
22	22
24	24
26	26
28	28
30	30
32	32
34	34
36	36

\* - Installed lengths. Includes Locking Band with gear Clamp.

# ADJUSTABLE LENGTHS

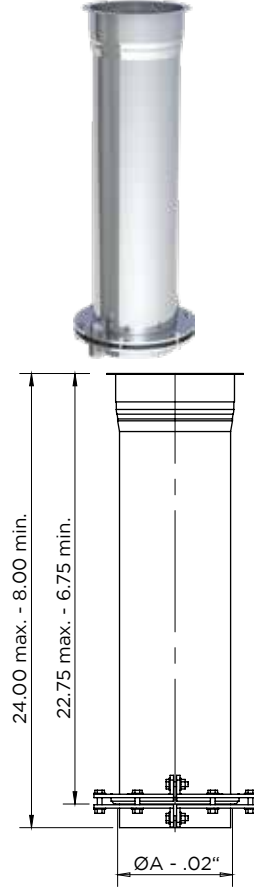
24" Adjustable Length / SWFLØ-24AL



Ø	ØA
6	6
7	7
8	8
9	9
10	10
11	11
12	12
13	13
14	14
16	16
18	18
20	20
22	22
24	24
26	26
28	28
30	30
32	32
34	34
36	36

\* - Installed lengths. Includes Locking Band with gear Clamp.

24" Adjustable Length with gasket / SWFLØ-24ALG

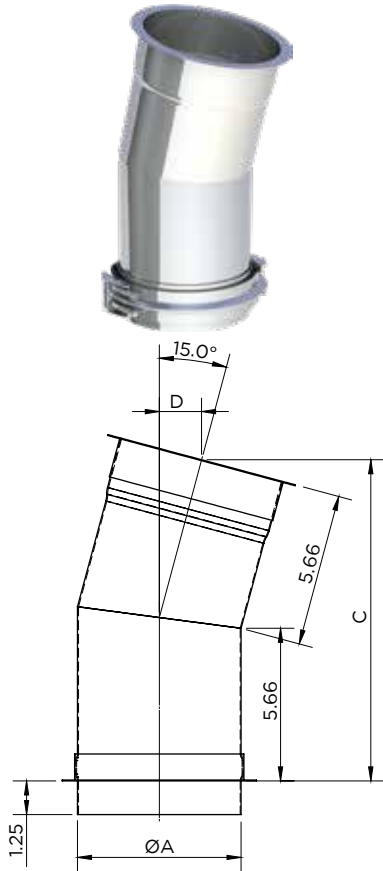


Ø	ØA
6	6
7	7
8	8
9	9
10	10
11	11
12	12
13	13
14	14
16	16
18	18
20	20
22	22
24	24
26	26
28	28
30	30
32	32
34	34
36	36

\* - Installed lengths. Includes Locking Band with gear Clamp.

# ELBOWS

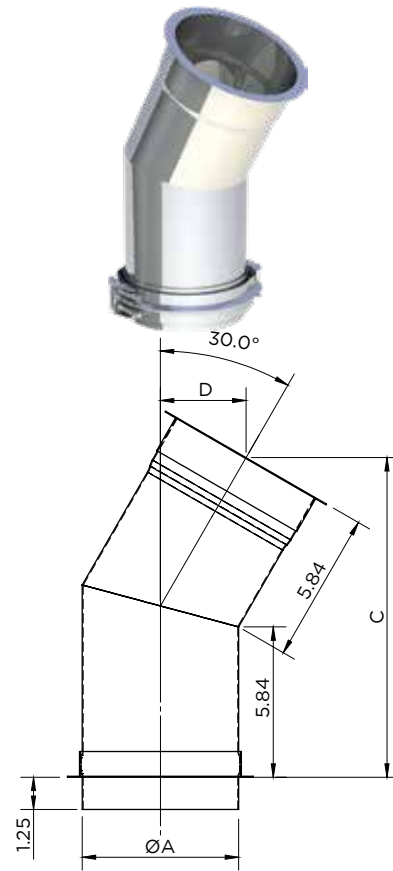
15° Elbow / SWFLØ-15EL



Ø	ØA	C	D
6	6	11.92	1.57
7	7	12.05	1.59
8	8	12.18	1.6
9	9	12.31	1.62
10	10	12.44	1.64
11	11	12.57	1.65
12	12	12.7	1.67
13	13	12.83	1.69
14	14	12.96	1.71
16	16	13.22	1.74
18	18	13.48	1.77
20	20	13.73	1.81
22	22	13.99	1.84
24	24	14.25	1.88
26	26	14.51	1.91
28	28	14.77	1.94
30	30	15.03	1.98
32	32	15.29	2.01
34	34	15.55	2.05
36	36	15.8	2.08

Includes Locking Band with gear Clamp.

30° Elbow / SWFLØ-30EL

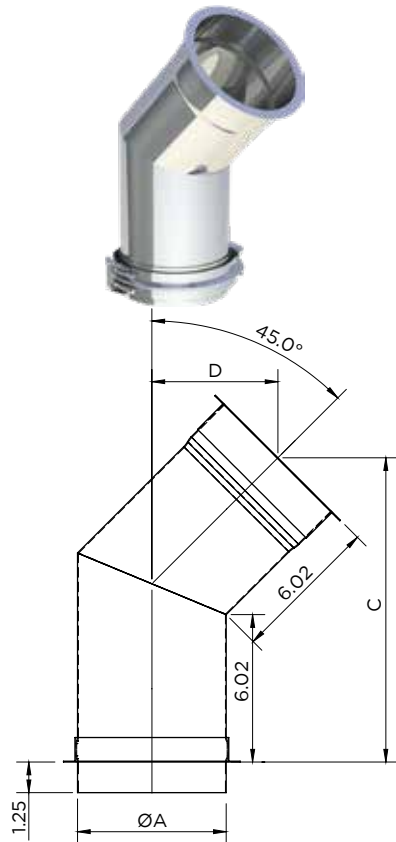


Ø	ØA	C	D
6	6	12.41	3.32
7	7	12.66	3.39
8	8	12.91	3.46
9	9	13.16	3.53
10	10	13.41	3.59
11	11	13.66	3.66
12	12	13.91	3.73
13	13	14.16	3.79
14	14	14.41	3.86
16	16	14.91	3.99
18	18	15.41	4.13
20	20	15.91	4.26
22	22	16.41	4.4
24	24	16.91	4.53
26	26	17.41	4.66
28	28	17.91	4.8
30	30	18.41	4.93
32	32	18.91	5.07
34	34	19.41	5.2
36	36	19.91	5.33

Includes Locking Band with gear Clamp.

# ELBOWS

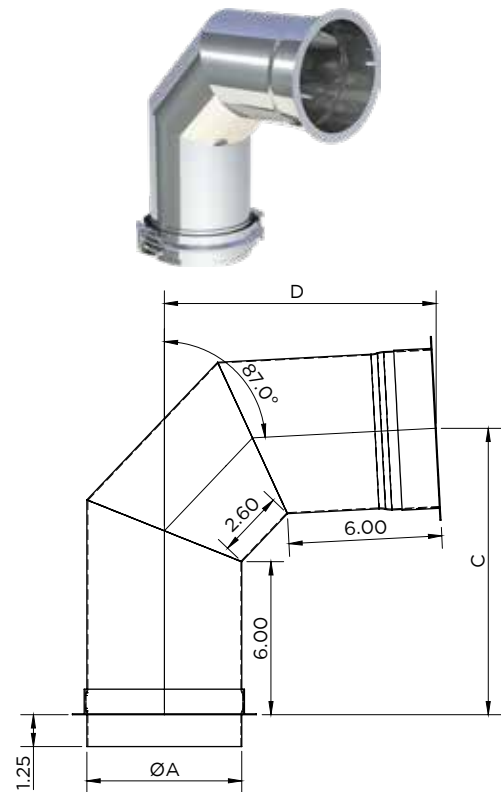
45° Elbow / SWFLØ-45EL



Ø	ØA	C	D
6	6	12.42	5.14
7	7	12.77	5.29
8	8	13.13	5.44
9	9	13.48	5.58
10	10	13.83	5.73
11	11	14.19	5.88
12	12	14.54	6.02
13	13	14.9	6.17
14	14	15.25	6.32
16	16	15.96	6.61
18	18	16.66	6.9
20	20	17.37	7.2
22	22	18.08	7.49
24	24	18.78	7.78
26	26	19.49	8.07
28	28	20.2	8.37
30	30	20.91	8.66
32	32	21.61	8.95
34	34	22.32	9.25
36	36	23.03	9.54

Includes Locking Band with gear Clamp.

87° Elbow / SWFLØ-87EL

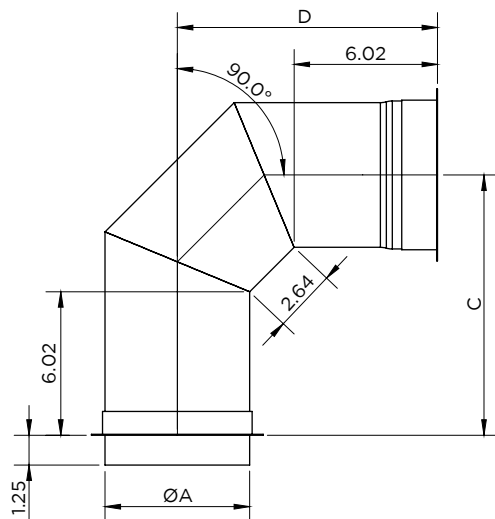


Ø	ØA	C	D
6	6	11.23	10.66
7	7	11.73	11.13
8	8	12.23	11.6
9	9	12.73	12.08
10	10	13.23	12.55
11	11	13.73	13.03
12	12	14.23	13.5
13	13	14.73	13.97
14	14	15.22	14.45
16	16	16.22	15.4
18	18	17.22	16.34
20	20	18.22	17.29
22	22	19.22	18.24
24	24	20.22	19.19
26	26	21.22	20.13
28	28	22.21	21.08
30	30	23.21	22.03
32	32	24.21	22.98
34	34	25.21	23.92
36	36	26.21	24.87

Includes Locking Band with gear Clamp.

# ELBOWS

## 90° Elbow/ SWFLØ-90EL



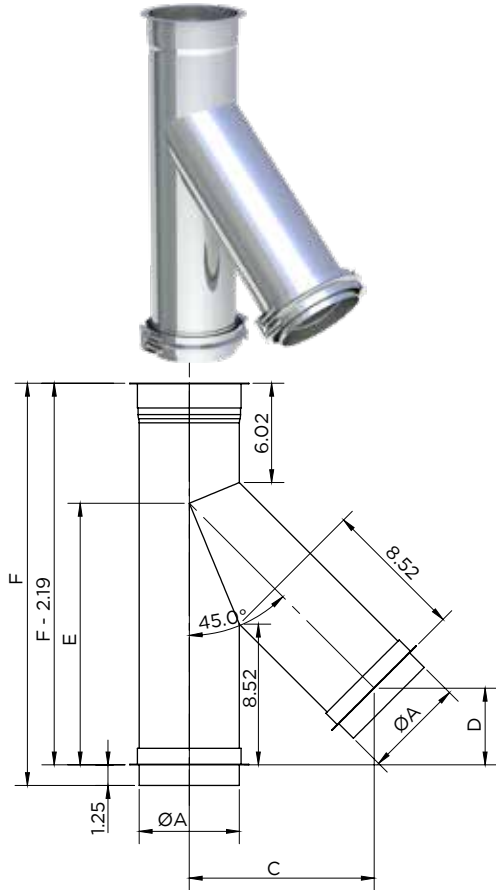
Ø	ØA	C	D
6	6	10.92	10.92
7	7	11.42	11.42
8	8	11.92	11.92
9	9	12.42	12.42
10	10	12.92	12.92
11	11	13.42	13.42
12	12	13.92	13.92
13	13	14.42	14.42
14	14	14.92	14.92
16	16	15.92	15.92
18	18	16.92	16.92
20	20	17.92	17.92
22	22	18.92	18.92
24	24	19.92	19.92
26	26	20.92	20.92
28	28	21.92	21.92
30	30	22.92	22.92
32	32	23.92	23.92
34	34	24.92	24.92
36	36	25.92	25.92

Includes Locking Band with gear Clamp.



# TEES

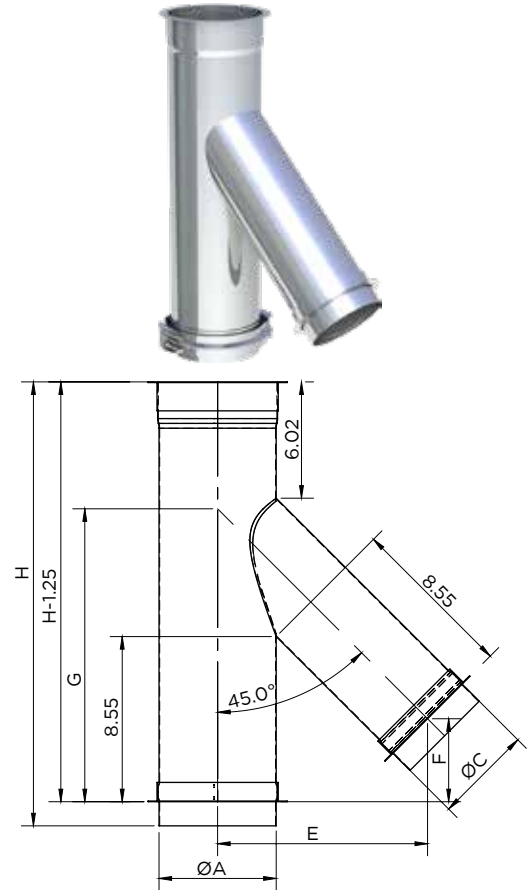
45° Tee / SWFLØ-45T



Ø	ØA	C	D	E	F
6	6	11.21	4.64	15.85	24.38
7	7	12.06	5	17.06	25.79
8	8	12.92	5.35	18.26	27.2
9	9	13.77	5.7	19.47	28.62
10	10	14.62	6.06	20.68	30.03
11	11	15.48	6.41	21.89	31.45
12	12	16.33	6.76	23.09	32.86
13	13	17.18	7.12	24.3	34.28
14	14	18.04	7.47	25.51	35.69
16	16	19.74	8.18	27.92	38.52
18	18	21.45	8.18	30.34	41.35
20	20	23.16	9.59	32.75	44.18
22	22	24.86	10.3	35.16	47
24	24	26.57	11.01	37.58	49.83
26	26	28.28	11.71	39.99	52.66
28	28	29.99	12.42	42.41	55.49
30	30	31.69	13.13	44.82	58.32
32	32	33.4	13.83	47.24	61.15
34	34	35.11	14.54	49.65	63.97
36	36	36.81	15.25	52.06	66.8

\* - Installed lengths. Includes Locking Band with gear Clamp.

45° Reduction Tee / SWFLØ-45TØ

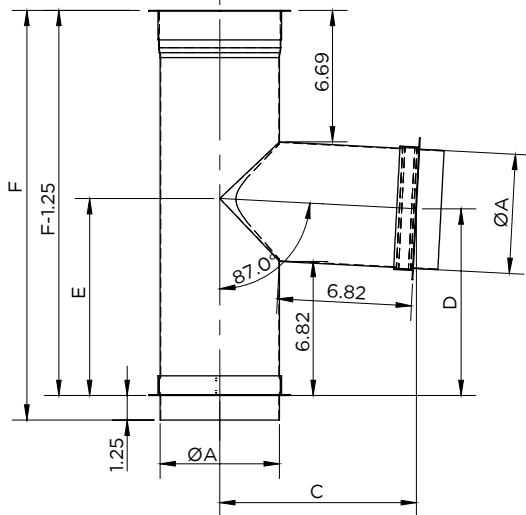


Ø	A	C	D	E	F	G	H
6	6						
7	7						
8	8						
9	9						
10	10						
11	11						
12	12						
13	13	Customer Dimension	Customer Dimension	Customer Dimension	Customer Dimension	Customer Dimension	Customer Dimension
14	14	Customer Dimension	Customer Dimension	Customer Dimension	Customer Dimension	Customer Dimension	Customer Dimension
16	16	Customer Dimension	Customer Dimension	Customer Dimension	Customer Dimension	Customer Dimension	Customer Dimension
18	18	Customer Dimension	Customer Dimension	Customer Dimension	Customer Dimension	Customer Dimension	Customer Dimension
20	20	Customer Dimension	Customer Dimension	Customer Dimension	Customer Dimension	Customer Dimension	Customer Dimension
22	22	Customer Dimension	Customer Dimension	Customer Dimension	Customer Dimension	Customer Dimension	Customer Dimension
24	24	Customer Dimension	Customer Dimension	Customer Dimension	Customer Dimension	Customer Dimension	Customer Dimension
26	26	Customer Dimension	Customer Dimension	Customer Dimension	Customer Dimension	Customer Dimension	Customer Dimension
28	28	Customer Dimension	Customer Dimension	Customer Dimension	Customer Dimension	Customer Dimension	Customer Dimension
30	30	Customer Dimension	Customer Dimension	Customer Dimension	Customer Dimension	Customer Dimension	Customer Dimension
32	32	Customer Dimension	Customer Dimension	Customer Dimension	Customer Dimension	Customer Dimension	Customer Dimension
34	34	Customer Dimension	Customer Dimension	Customer Dimension	Customer Dimension	Customer Dimension	Customer Dimension
36	36	Customer Dimension	Customer Dimension	Customer Dimension	Customer Dimension	Customer Dimension	Customer Dimension

\* - Installed lengths. Includes Locking Band with gear Clamp.

# TEES

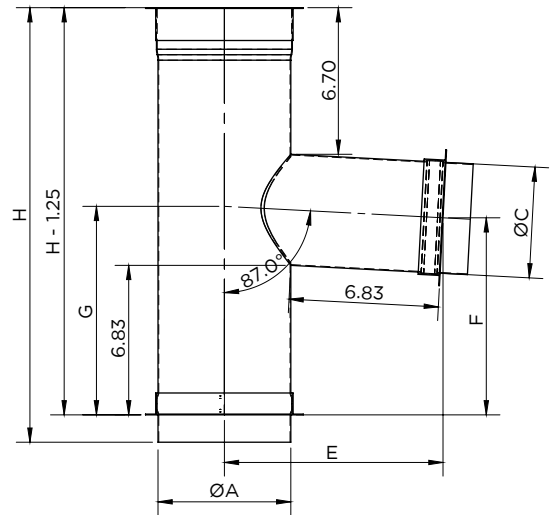
87° Tee / SWFLØ-87T



Ø	ØA	C	D	E	F
6	6	10	9.49	10.02	20.84
7	7	10.53	9.99	10.54	21.84
8	8	11.06	10.49	11.07	22.84
9	9	11.58	10.99	11.6	23.84
10	10	12.11	11.49	12.13	24.84
11	11	12.63	11.99	12.65	25.84
12	12	13.16	12.49	13.18	26.84
13	13	13.69	12.99	13.71	27.84
14	14	14.21	13.49	14.23	28.85
16	16	15.27	14.49	15.29	30.85
18	18	16.32	15.49	16.34	32.85
20	20	17.37	16.48	17.39	34.86
22	22	18.42	17.48	18.45	36.86
24	24	19.48	18.48	19.5	38.86
26	26	20.53	19.48	20.56	40.86
28	28	21.58	20.48	21.61	42.87
30	30	22.63	21.48	22.66	44.87
32	32	23.68	22.48	23.72	46.87
34	34	24.74	23.47	24.77	48.87
36	36	25.79	24.47	25.82	50.88

\* - Installed lengths. Includes Locking Band with gear Clamp.

87° Reduction Tee / SWFL AIRØ-87TØ

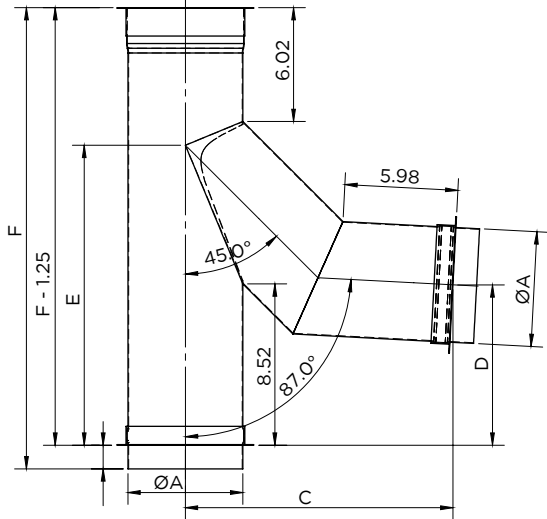


Ø	ØA	C	D	E	F	ØG	ØH
6	6						
7	7						
8	8						
9	9						
10	10						
11	11						
12	12						
13	13	Customer Dimension	Customer Dimension	Customer Dimension	Customer Dimension	Customer Dimension	Customer Dimension
14	14	Customer Dimension	Customer Dimension	Customer Dimension	Customer Dimension	Customer Dimension	Customer Dimension
16	16	Customer Dimension	Customer Dimension	Customer Dimension	Customer Dimension	Customer Dimension	Customer Dimension
18	18	Customer Dimension	Customer Dimension	Customer Dimension	Customer Dimension	Customer Dimension	Customer Dimension
20	20	Customer Dimension	Customer Dimension	Customer Dimension	Customer Dimension	Customer Dimension	Customer Dimension
22	22	Customer Dimension	Customer Dimension	Customer Dimension	Customer Dimension	Customer Dimension	Customer Dimension
24	24	Customer Dimension	Customer Dimension	Customer Dimension	Customer Dimension	Customer Dimension	Customer Dimension
26	26	Customer Dimension	Customer Dimension	Customer Dimension	Customer Dimension	Customer Dimension	Customer Dimension
28	28	Customer Dimension	Customer Dimension	Customer Dimension	Customer Dimension	Customer Dimension	Customer Dimension
30	30	Customer Dimension	Customer Dimension	Customer Dimension	Customer Dimension	Customer Dimension	Customer Dimension
32	32	Customer Dimension	Customer Dimension	Customer Dimension	Customer Dimension	Customer Dimension	Customer Dimension
34	34	Customer Dimension	Customer Dimension	Customer Dimension	Customer Dimension	Customer Dimension	Customer Dimension
36	36	Customer Dimension	Customer Dimension	Customer Dimension	Customer Dimension	Customer Dimension	Customer Dimension

\* - Installed length is determined by diameter G. Includes Locking Band with gear Clamp

# TEES

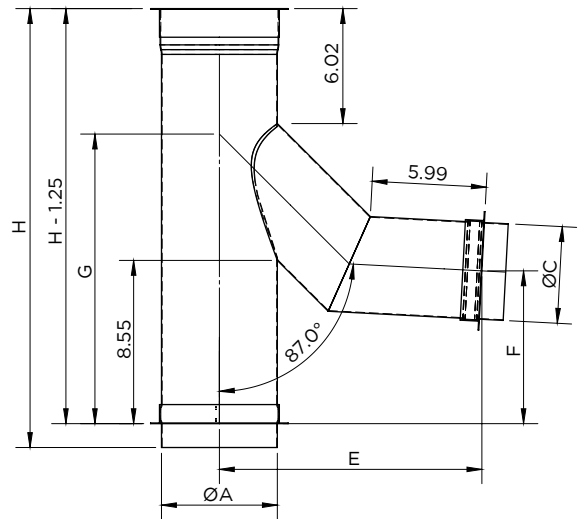
87° Boot Tee / SWFLØ-87BT



Ø	ØA	C	D	E	F
6	6	14.14	8.47	15.85	24.38
7	7	15.05	8.95	17.06	25.79
8	8	15.96	9.43	18.26	27.2
9	9	16.87	9.91	19.47	28.62
10	10	17.78	10.39	20.68	30.03
11	11	18.69	10.87	21.89	31.45
12	12	19.6	11.35	23.09	32.86
13	13	20.51	11.83	24.3	34.28
14	14	21.42	12.31	25.51	35.69
16	16	23.23	13.27	27.92	38.52
18	18	25.05	14.22	30.34	41.35
20	20	26.87	15.18	32.75	44.18
22	22	28.69	16.14	35.16	47
24	24	30.51	17.1	37.58	49.83
26	26	32.33	18.06	39.99	52.66
28	28	34.15	19.02	42.41	55.49
30	30	35.97	19.97	44.82	58.32
32	32	37.79	20.93	47.24	61.15
34	34	39.61	21.89	49.65	63.97
36	36	41.42	22.85	52.06	66.8

\* - Installed lengths. Includes Locking Band with gear Clamp

87° Boot Reduction Tee / SWFLØ-87BTØ

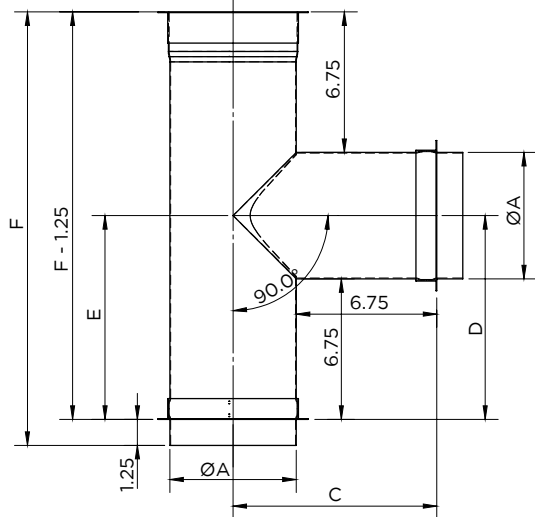


Ø	ØA	C	D	E	F	ØG	ØH
6	6						
7	7						
8	8						
9	9						
10	10						
11	11						
12	12						
13	13						
14	14						
16	16						
18	18						
20	20						
22	22						
24	24						
26	26						
28	28						
30	30						
32	32						
34	34						
36	36						

\* - Installed lengths. Includes Locking Band with gear Clamp

# TEES

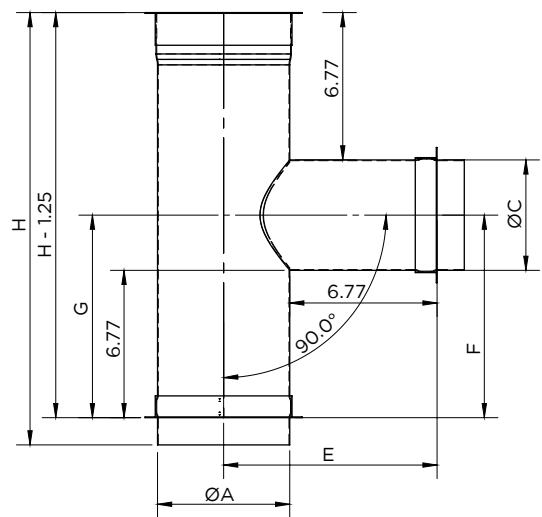
90° Tee / SWFLØ-90T



Ø	ØA	C	D	E	F
6	6	9.79	9.79	9.79	20.82
7	7	10.3	10.3	10.3	21.82
8	8	10.79	10.79	10.79	22.82
9	9	11.3	11.3	11.3	23.82
10	10	11.79	11.79	11.79	24.82
11	11	12.3	12.3	12.3	25.82
12	12	12.79	12.79	12.79	26.82
13	13	13.3	13.3	13.3	27.82
14	14	13.79	13.79	13.79	28.82
16	16	14.79	14.79	14.79	30.82
18	18	15.79	15.79	15.79	32.82
20	20	16.79	16.79	16.79	34.82
22	22	17.79	17.79	17.79	36.82
24	24	18.79	18.79	18.79	38.82
26	26	19.79	19.79	19.79	40.82
28	28	20.79	20.79	20.79	42.82
30	30	21.79	21.79	21.79	44.82
32	32	22.79	22.79	22.79	46.82
34	34	23.79	23.79	23.79	48.82
36	36	24.79	24.79	24.79	50.82

\* - Installed lengths. Includes Locking Band with gear Clamp

90° Reduction Tee / SWFLØ-90TØ

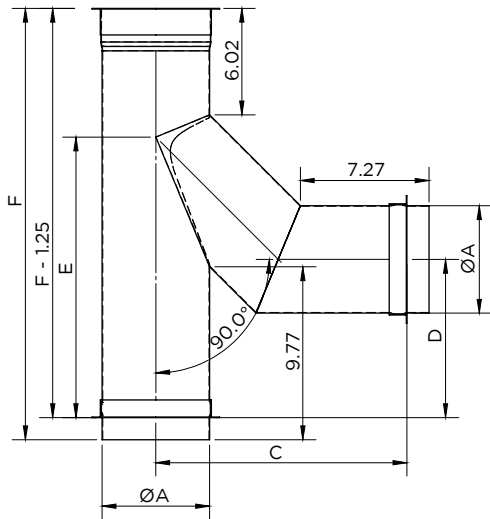


Ø	ØA	C	D	E	F	ØG	ØH
6	6						
7	7						
8	8						
9	9						
10	10						
11	11						
12	12						
13	13	Customer Dimension	Customer Dimension	Customer Dimension	Customer Dimension	Customer Dimension	Customer Dimension
14	14	Customer Dimension	Customer Dimension	Customer Dimension	Customer Dimension	Customer Dimension	Customer Dimension
16	16	Customer Dimension	Customer Dimension	Customer Dimension	Customer Dimension	Customer Dimension	Customer Dimension
18	18	Customer Dimension	Customer Dimension	Customer Dimension	Customer Dimension	Customer Dimension	Customer Dimension
20	20	Customer Dimension	Customer Dimension	Customer Dimension	Customer Dimension	Customer Dimension	Customer Dimension
22	22	Customer Dimension	Customer Dimension	Customer Dimension	Customer Dimension	Customer Dimension	Customer Dimension
24	24	Customer Dimension	Customer Dimension	Customer Dimension	Customer Dimension	Customer Dimension	Customer Dimension
26	26	Customer Dimension	Customer Dimension	Customer Dimension	Customer Dimension	Customer Dimension	Customer Dimension
28	28	Customer Dimension	Customer Dimension	Customer Dimension	Customer Dimension	Customer Dimension	Customer Dimension
30	30	Customer Dimension	Customer Dimension	Customer Dimension	Customer Dimension	Customer Dimension	Customer Dimension
32	32	Customer Dimension	Customer Dimension	Customer Dimension	Customer Dimension	Customer Dimension	Customer Dimension
34	34	Customer Dimension	Customer Dimension	Customer Dimension	Customer Dimension	Customer Dimension	Customer Dimension
36	36	Customer Dimension	Customer Dimension	Customer Dimension	Customer Dimension	Customer Dimension	Customer Dimension

\* - Installed length is determined by diameter G. Includes Locking Band with gear Clamp

# TEES

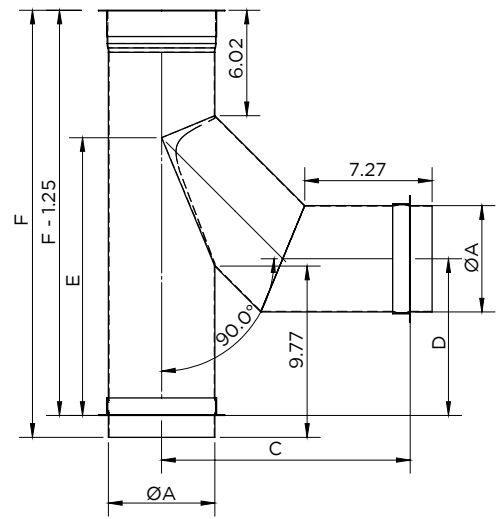
90° Boot Tee / SWFLØ-90BT



Ø	ØA	C	D	E	F
6	6	14.19	8.94	15.85	24.38
7	7	15.1	9.44	17.06	25.79
8	8	16.02	9.94	18.26	27.2
9	9	16.93	10.44	19.47	28.62
10	10	17.84	10.94	20.68	30.03
11	11	18.76	11.44	21.89	31.45
12	12	19.67	11.94	23.09	32.86
13	13	20.59	12.44	24.3	34.28
14	14	21.5	12.94	25.51	35.69
16	16	23.33	13.94	27.92	38.52
18	18	25.16	14.94	30.34	41.35
20	20	26.99	15.94	32.75	44.18
22	22	28.81	16.94	35.16	47
24	24	30.64	17.94	37.58	49.83
26	26	32.47	18.94	39.99	52.66
28	28	34.3	19.94	42.41	55.49
30	30	36.13	20.94	44.82	58.32
32	32	37.96	21.94	47.24	61.15
34	34	39.79	22.94	49.65	63.97
36	36	41.61	23.94	52.06	66.8

\* - Installed lengths. Includes Locking Band with gear Clamp

90° Reduction Boot Tee / SWFLØ-90BTØ

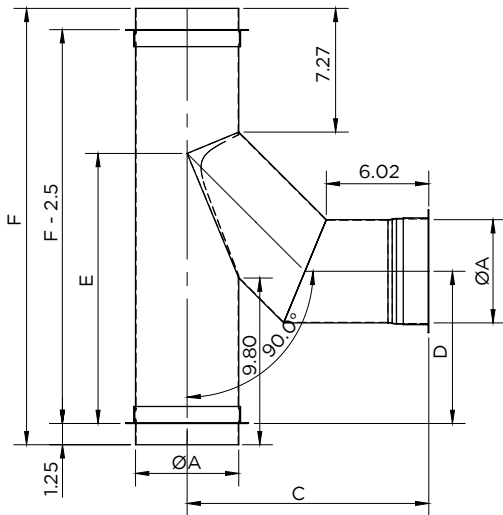


Ø	ØA	ØC	ØD	E	F	G	H
6	6						
7	7						
8	8						
9	9						
10	10						
11	11						
12	12						
13	13						
14	14						
16	16						
18	18						
20	20						
22	22						
24	24						
26	26						
28	28						
30	30						
32	32						
34	34						
36	36						

\* - Installed length is determined by diameter G. Includes Locking Band with gear Clamp

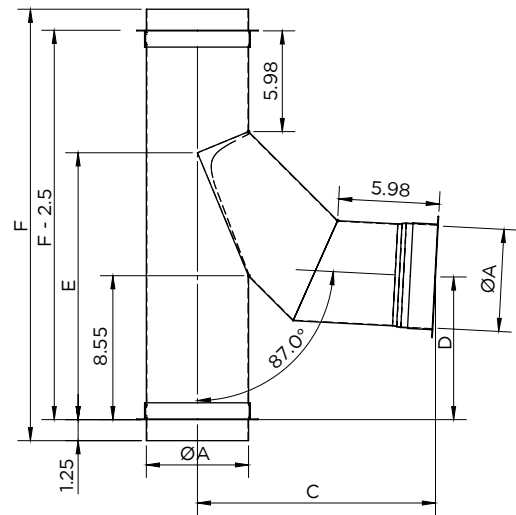
# TEES

**87° Grease Boot Tee / SWFLØ-90GBT**



Ø	ØA	C	D	E	F
6	6	14.14	8.47	15.85	25.63
7	7	15.05	8.95	17.06	27.04
8	8	15.96	9.43	18.26	28.45
9	9	16.87	9.91	19.47	29.87
10	10	17.78	10.39	20.68	31.28
11	11	18.69	10.87	21.89	34.11
12	12	19.6	11.35	23.09	34.16
13	13	20.51	11.83	24.3	35.53
14	14	21.42	12.31	25.51	36.94
16	16	23.23	13.27	27.92	39.77
18	18	25.05	14.22	30.34	42.6
20	20	26.87	15.18	32.75	45.43
22	22	28.69	16.14	35.16	48.25
24	24	30.51	17.1	37.58	51.08
26	26	32.33	18.06	39.99	53.91
28	28	34.15	19.02	42.41	56.74
30	30	35.97	19.97	44.82	59.57
32	32	37.79	20.93	47.24	62.4
34	34	39.61	21.89	49.65	65.22
36	36	41.42	22.85	52.06	68.05

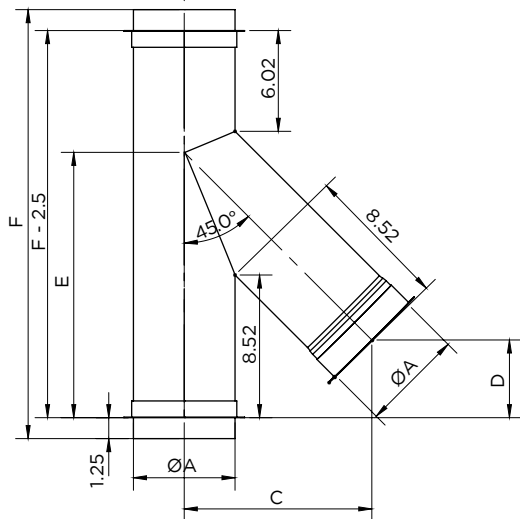
**90° Grease Boot Tee / SWFLØ-87GBT**



Ø	ØA	C	D	E	F
6	6	14.14	8.47	15.85	25.63
7	7	15.05	8.95	17.06	27.04
8	8	15.96	9.43	18.26	28.45
9	9	16.87	9.91	19.47	29.87
10	10	17.78	10.39	20.68	31.28
11	11	18.69	10.87	21.89	32.7
12	12	19.6	11.35	23.09	34.11
13	13	20.51	11.83	24.3	35.53
14	14	21.42	12.31	25.51	36.94
16	16	23.23	13.27	27.92	39.77
18	18	25.05	14.22	30.34	42.6
20	20	26.87	15.18	32.75	45.43
22	22	28.69	16.14	35.16	48.25
24	24	30.51	17.1	37.58	51.08
26	26	32.33	18.06	39.99	53.91
28	28	34.15	19.02	42.41	56.74
30	30	35.97	19.97	44.82	59.57
32	32	37.79	20.93	47.24	62.4
34	34	39.61	21.89	49.65	65.22
36	36	41.42	22.85	52.06	68.05

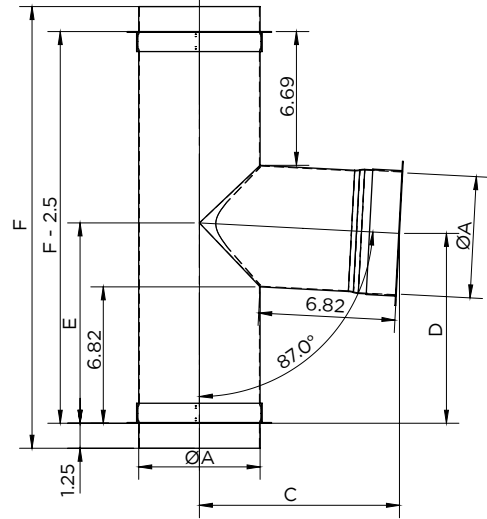
# TEES

45° Grease Duct Tee / SWFLØ-45GT



Ø	ØA	C	D	E	F
6	6	11.21	4.64	15.85	25.63
7	7	12.06	5	17.06	27.04
8	8	12.92	5.35	18.26	28.45
9	9	13.77	5.7	19.47	29.87
10	10	14.62	6.06	20.68	31.28
11	11	15.48	6.41	21.89	32.7
12	12	16.33	6.76	23.09	34.11
13	13	17.18	7.12	24.3	35.53
14	14	18.04	7.47	25.51	36.94
16	16	19.74	8.18	27.92	39.77
18	18	21.45	8.18	30.34	42.6
20	20	23.16	9.59	32.75	45.43
22	22	24.86	10.3	35.16	48.25
24	24	26.57	11.01	37.58	51.08
26	26	28.28	11.71	39.99	53.91
28	28	29.99	12.42	42.41	56.74
30	30	31.69	13.13	44.82	59.57
32	32	33.4	13.83	47.24	62.4
34	34	35.11	14.54	49.65	65.22
36	36	36.81	15.25	52.06	68.05

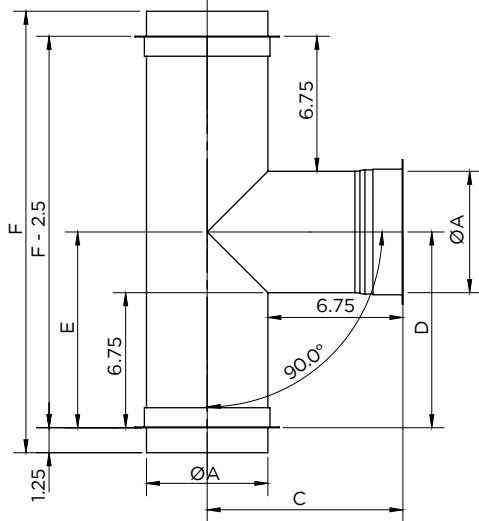
87° Grease Duct Tee / SWFLØ-87GT



Ø	ØA	C	D	E	F
6	6	10	9.49	10.02	22.09
7	7	10.53	9.99	10.54	23.09
8	8	11.06	10.49	11.07	24.09
9	9	11.58	10.99	11.6	25.09
10	10	12.11	11.49	12.13	26.09
11	11	12.63	11.99	12.65	27.09
12	12	13.16	12.49	13.18	28.09
13	13	13.69	12.99	13.71	29.1
14	14	14.21	13.49	14.23	30.1
16	16	15.27	14.49	15.29	32.1
18	18	16.32	15.49	16.34	34.1
20	20	17.37	16.48	17.39	36.11
22	22	18.42	17.48	18.45	38.11
24	24	19.48	18.48	19.5	40.11
26	26	20.53	19.48	20.56	42.11
28	28	21.58	20.48	21.61	44.12
30	30	22.63	21.48	22.66	46.12
32	32	23.68	22.48	23.72	48.12
34	34	24.74	23.47	24.77	50.12
36	36	25.79	24.47	25.82	52.13

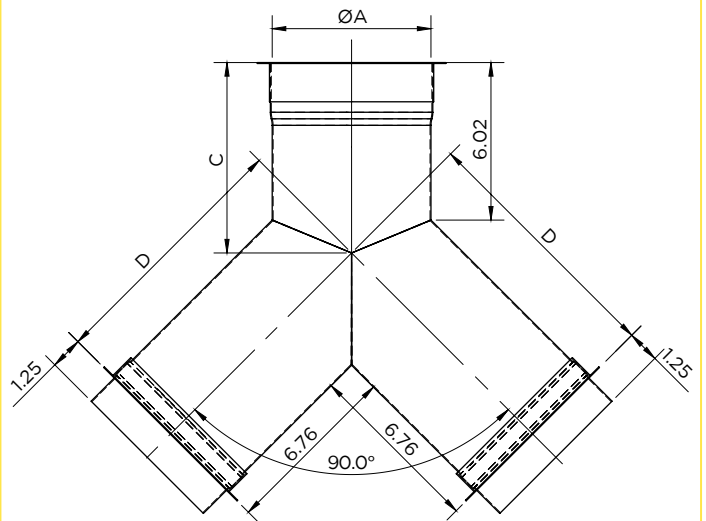
# TEES

90° Grease Duct Tee / SWFLØ-90GT



Ø	ØA	C	D	E	F
6	6	9.79	9.79	9.79	22.07
7	7	10.29	10.29	10.29	23.07
8	8	10.79	10.79	10.79	24.07
9	9	11.29	11.29	11.3	25.07
10	10	11.79	11.79	11.79	26.07
11	11	12.29	12.29	12.3	27.07
12	12	12.79	12.79	12.79	28.07
13	13	13.29	13.29	13.3	29.07
14	14	13.79	13.79	13.79	30.07
16	16	14.79	14.79	14.79	32.07
18	18	15.79	15.79	15.79	34.07
20	20	16.79	16.79	16.79	36.07
22	22	17.79	17.79	17.79	38.07
24	24	18.79	18.79	18.79	40.07
26	26	19.79	19.79	19.79	42.07
28	28	20.79	20.79	20.79	44.07
30	30	21.79	21.79	21.79	46.07
32	32	22.79	22.79	22.79	48.07
34	34	23.79	23.79	23.79	50.07
36	36	24.79	24.79	24.79	52.07

90° Wye Tee / SWFLØ-90WT

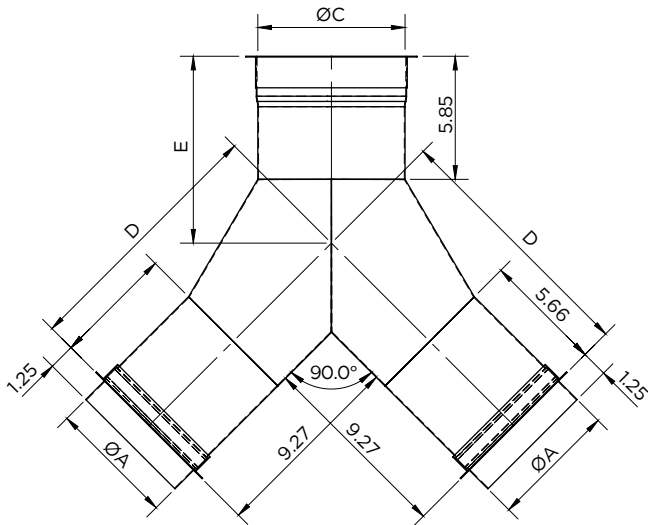


Ø	ØA	C	D
6	6	7.28	9.8
7	7	7.49	10.3
8	8	7.7	10.8
9	9	7.9	11.3
10	10	8.11	11.8
11	11	8.32	12.3
12	12	8.52	12.8
13	13	8.73	13.3
14	14	8.94	13.8
16	16	9.35	14.8
18	18	9.77	15.8
20	20	10.18	16.8
22	22	10.59	17.8
24	24	11.01	18.8
26	26	11.42	19.8
28	28	11.84	20.8
30	30	12.25	21.8
32	32	12.67	22.8
34	34	13.08	23.8
36	36	13.49	24.8



# TEES

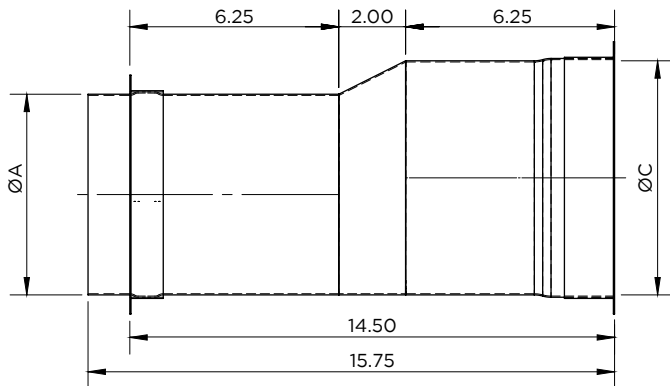
90° Reduction Wye Tee / SWFLØ-90WTØ



Ø	ØA	ØC	ØD	E	F
6	6				
7	7				
8	8				
9	9				
10	10				
11	11				
12	12				
13	13	Customer Dimension	Customer Dimension	Customer Dimension	Customer Dimension
14	14				
16	16				
18	18				
20	20				
22	22				
24	24				
26	26				
28	28				
30	30				
32	32				
34	34				
36	36				

# INCREASERS / REDUCERS

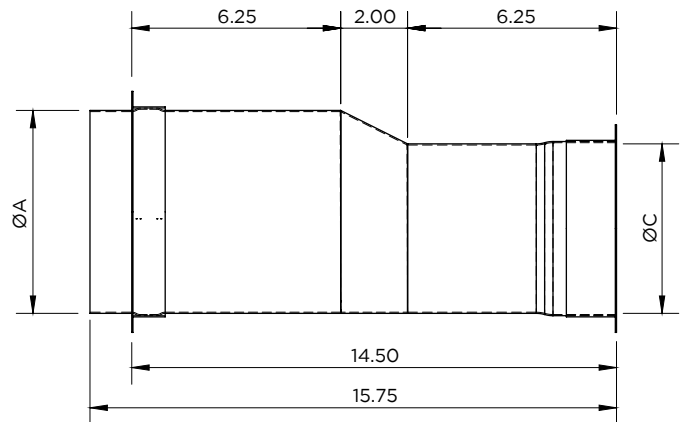
**Tapered Eccentric Increaser / SWFLØ-TEIØ**



Ø	ØA	C
6	6	Customer Dimension
7	7	
8	8	
9	9	
10	10	
11	11	
12	12	
13	13	
14	14	
16	16	
18	18	
20	20	
22	22	
24	24	
26	26	
28	28	
30	30	
32	32	
34	34	
36	36	

Includes Locking Band with gear Clamp

**Tapered Eccentric Reducer / SWFLØ-TERØ**

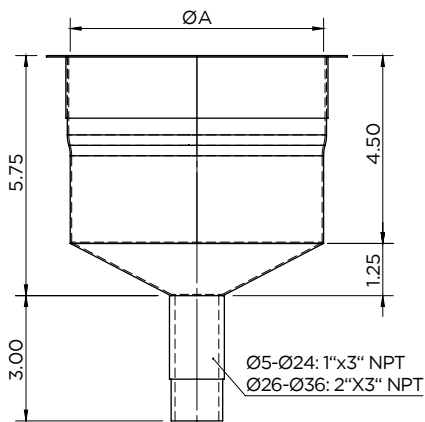


Ø	ØA	C
6	6	Customer Dimension
7	7	
8	8	
9	9	
10	10	
11	11	
12	12	
13	13	
14	14	
16	16	
18	18	
20	20	
22	22	
24	24	
26	26	
28	28	
30	30	
32	32	
34	34	
36	36	

Includes Locking Band with gear Clamp.

# TEE CAPS

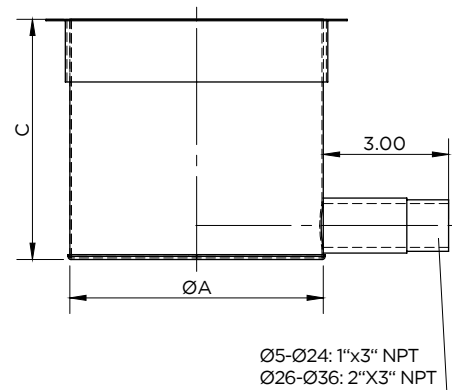
Drain Tee Cap - Bottom / SWFLØ-DCB



Ø	ØA
6	6
7	7
8	8
9	9
10	10
11	11
12	12
13	13
14	14
16	16
18	18
20	20
22	22
24	24
26	26
28	28
30	30
32	32
34	34
36	36

Includes Locking Band with gear Clamp

Drain Tee Cap - Side / SWFLØ-DCS

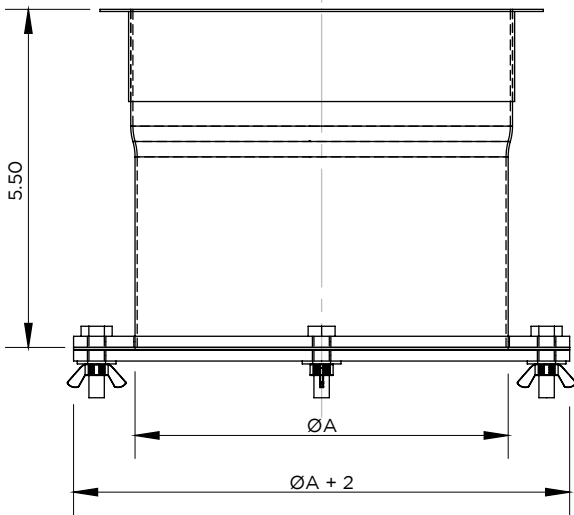


Ø	ØA	C
6	6	5.75
7	7	
8	8	
9	9	
10	10	
11	11	
12	12	
13	13	
14	14	
16	16	
18	18	
20	20	
22	22	
24	24	7
26	26	
28	28	
30	30	
32	32	
34	34	
36	36	

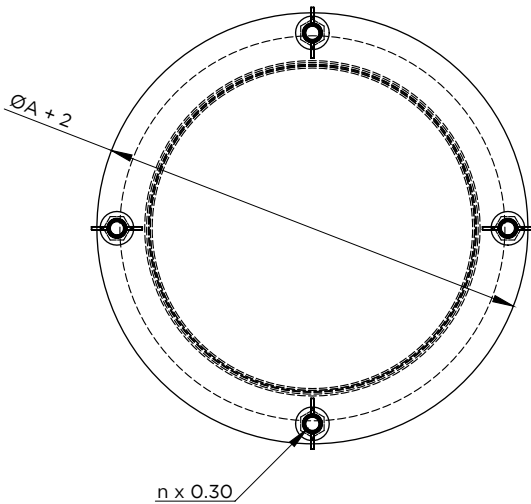
Includes Locking Band with gear Clamp

# TEE CAPS

Tee Cap Access / SWFLØ-TCA

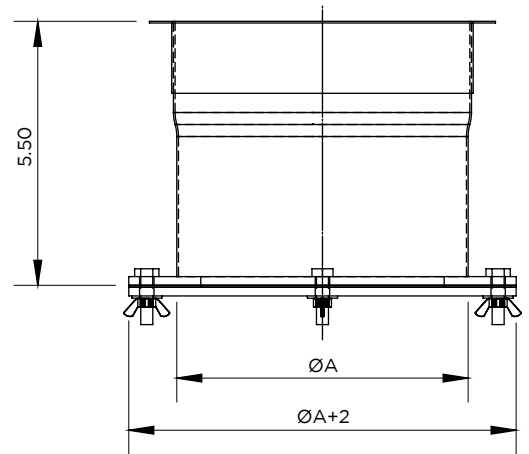


Ø	ØA
6	6
7	7
8	8
9	9
10	10
11	11
12	12
13	13
14	14
16	16
18	18
20	20
22	22
24	24
26	26
28	28
30	30
32	32
34	34
36	36

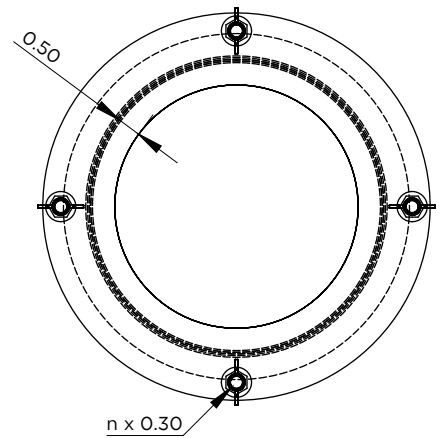


Includes Locking Band with gear Clamp

Grease Tee Cap Access / SWFLØ-GTCA

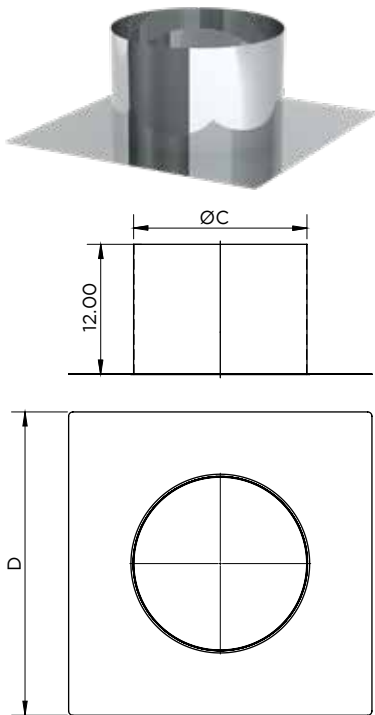


Ø	ØA
6	6
7	7
8	8
9	9
10	10
11	11
12	12
13	13
14	14
16	16
18	18
20	20
22	22
24	24
26	26
28	28
30	30
32	32
34	34
36	36



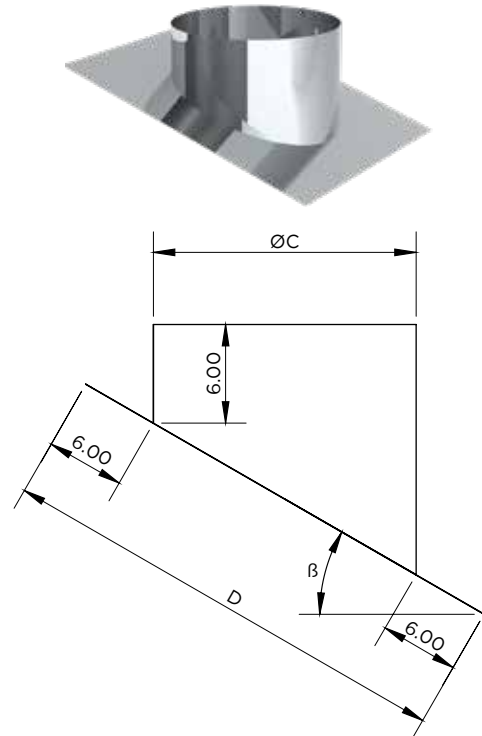
# FLASHINGS

## Flat Roof Flashing / SWKLØ-FRF

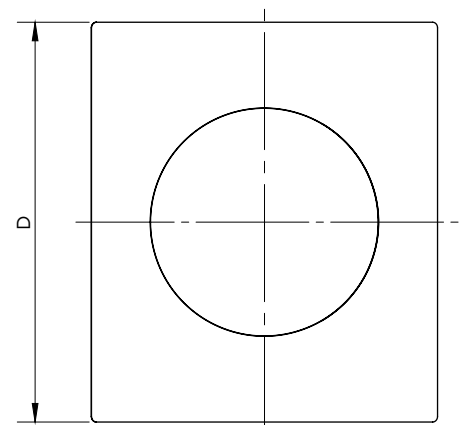


Ø	ØC	D
6	16	28
7	17	29
8	18	30
9	19	31
10	20	32
11	21	33
12	22	34
13	23	35
14	24	36
16	26	38
18	28	40
20	30	42
22	32	44
24	34	46
26	36	48
28	38	50
30	40	52
32	42	54
34	44	56
36	46	58

## Pitched Roof Flashing / SWKLØ-PRF

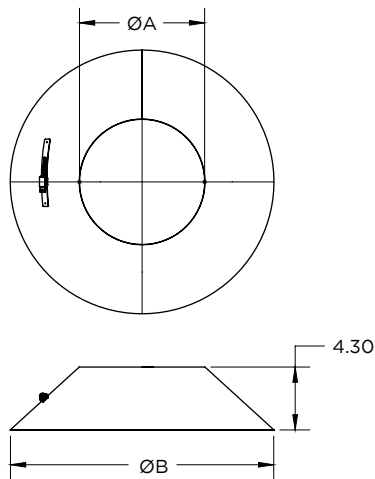
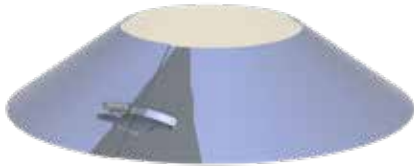


Ø	ØC	D	β
6	16	28	
7	17	29	
8	18	30	
9	19	31	
10	20	32	
11	21	33	
12	22	34	
13	23	35	
14	24	36	
16	26	38	
18	28	40	
20	30	42	
22	32	44	
24	34	46	
26	36	48	
28	38	50	
30	40	52	
32	42	54	
34	44	56	
36	46	58	



# FLASHINGS

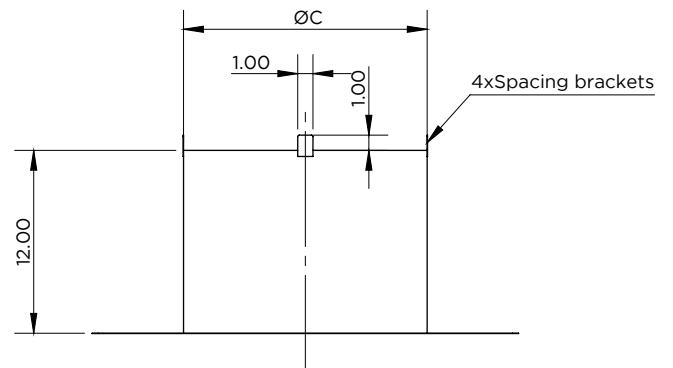
## Storm Collar / SWKLØ-SC



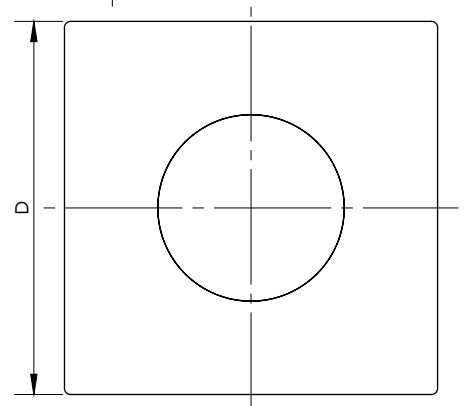
Ø	ØA	ØB
3	3 <sup>9</sup> / <sub>16</sub>	15
4	4 <sup>9</sup> / <sub>16</sub>	16
5	5 <sup>9</sup> / <sub>16</sub>	17
6	6 <sup>9</sup> / <sub>16</sub>	18
7	7 <sup>9</sup> / <sub>16</sub>	19
8	8 <sup>9</sup> / <sub>16</sub>	20
9	9 <sup>9</sup> / <sub>16</sub>	21
10	10 <sup>9</sup> / <sub>16</sub>	22
12	11 <sup>9</sup> / <sub>16</sub>	24
13	12 <sup>9</sup> / <sub>16</sub>	25
14	13 <sup>9</sup> / <sub>16</sub>	26
16	14 <sup>9</sup> / <sub>16</sub>	28
18	16 <sup>9</sup> / <sub>16</sub>	30
20	18 <sup>9</sup> / <sub>16</sub>	32
22	20 <sup>9</sup> / <sub>16</sub>	34
24	22 <sup>9</sup> / <sub>16</sub>	36
26	24 <sup>9</sup> / <sub>16</sub>	38
28	26 <sup>9</sup> / <sub>16</sub>	40
30	28 <sup>9</sup> / <sub>16</sub>	42
32	30 <sup>9</sup> / <sub>16</sub>	44
34	34 <sup>9</sup> / <sub>16</sub>	46
36	36 <sup>9</sup> / <sub>16</sub>	48

For wall penetrations

## Ventilated Roof Flashing / SWKL-VRF

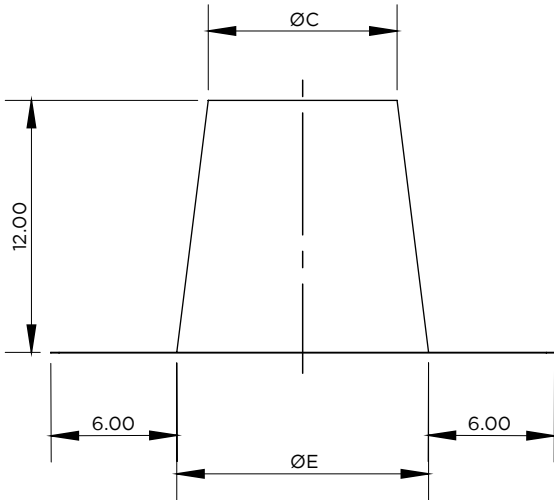


Ø	A	C	D
6	6	16	28
7	7	17	29
8	8	18	30
9	9	19	31
10	10	20	32
11	11	21	33
12	12	22	34
13	13	23	35
14	14	24	36
16	16	26	38
18	18	28	40
20	20	30	42
22	22	32	44
24	24	34	46
26	26	36	48
28	28	38	50
30	30	40	52
32	32	42	54
34	34	44	56
36	36	46	58

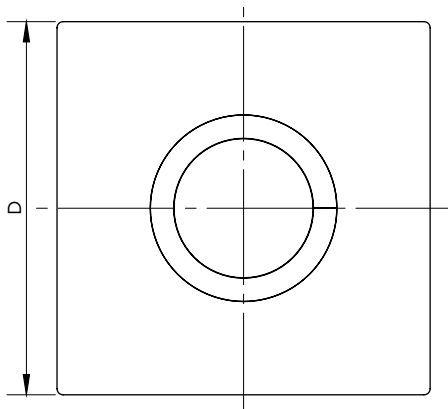


# FLASHINGS

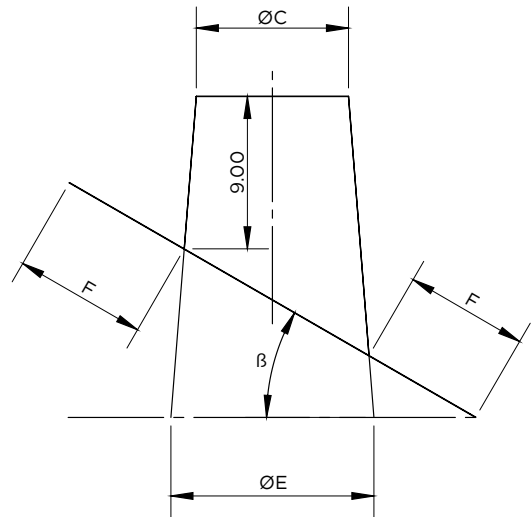
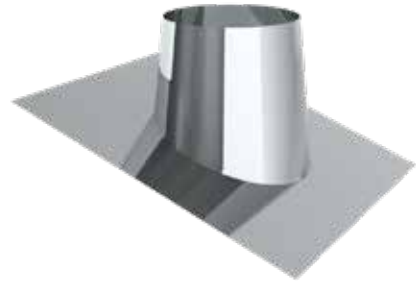
Flat Cone Flashing / SWKL-FCF



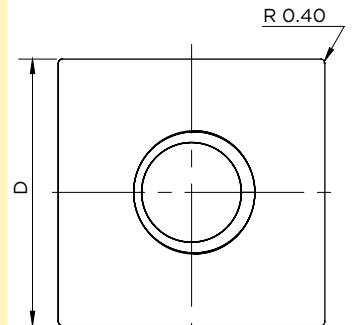
Ø	C	D	E
6	6	9	24
7	7	10	25
8	8	11	26
9	9	12	27
10	10	13	28
11	11	14	29
12	12	15	30
13	13	16	31
14	14	17	32
16	16	19	34
18	18	21	36
20	20	23	38
22	22	25	40
24	24	27	42
26	26	29	44
28	28	31	46
30	30	33	48
32	32	35	50
34	34	37	52
36	36	39	54



Pitched Cone Flashing / SWKL-PCF

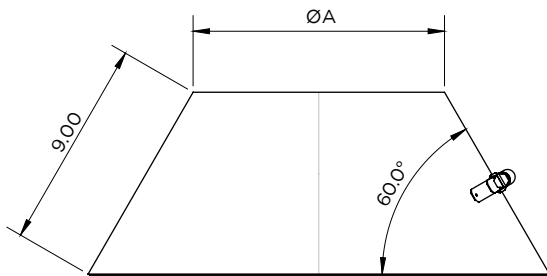


Ø	A	C	D	E	F	β
6	6	9	24	12	7.27	
7	7	10	25	13	7.26	
8	8	11	26	14	7.25	
9	9	12	27	15	7.25	
10	10	13	28	16	7.24	
11	11	14	29	17	7.23	
12	12	15	30	18	7.22	
13	13	16	31	19	7.21	
14	14	17	32	20	7.21	
16	16	19	34	22	7.19	
18	18	21	36	24	7.18	
20	20	23	38	26	7.17	
22	22	25	40	28	7.16	
24	24	27	42	30	7.15	
26	26	29	44	32	7.14	
28	28	31	46	34	7.14	
30	30	33	48	36	7.13	
32	32	35	50	38	7.12	
34	34	37	52	40	7.12	
36	36	39	54	42	7.11	



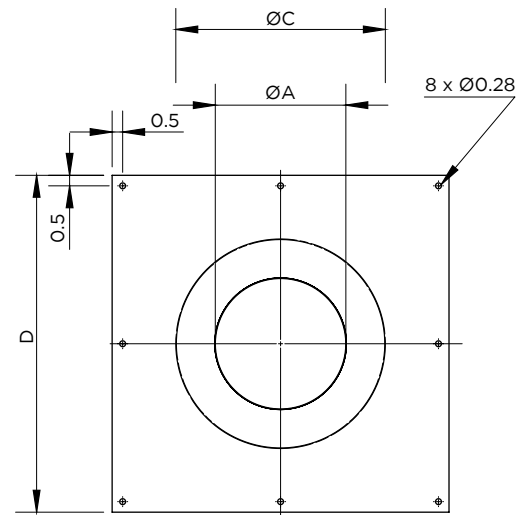
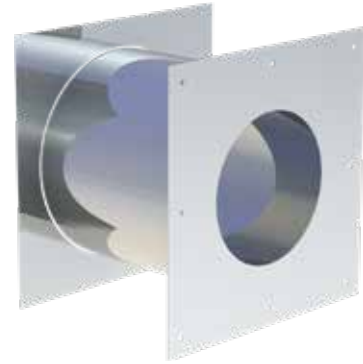
# FLASHINGS

Storm Collar For Coned Flashings / SWKL-SCCF

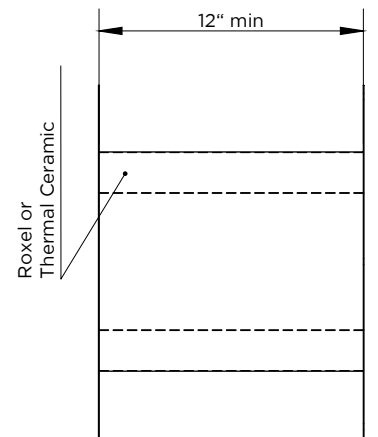


Ø	ØA
6	6
7	7
8	8
9	9
10	10
11	11
12	12
13	13
14	14
16	16
18	18
20	20
22	22
24	24
26	26
28	28
30	30
32	32
34	34
36	36

Low Temperature Thimble / SWKL-LTT



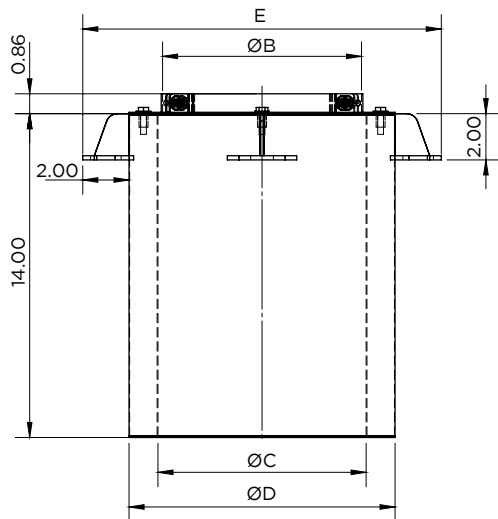
Ø	A	C	D
6	6	10	16
7	7	11	17
8	8	12	18
9	9	13	19
10	10	14	20
11	11	15	21
12	12	16	22
13	13	17	23
14	14	18	24
16	16	20	26
18	18	22	28
20	20	24	30
22	22	26	32
24	24	28	34
26	26	30	36
28	28	32	38
30	30	34	40
32	32	36	42
34	34	38	44
36	36	40	46





# FLASHINGS

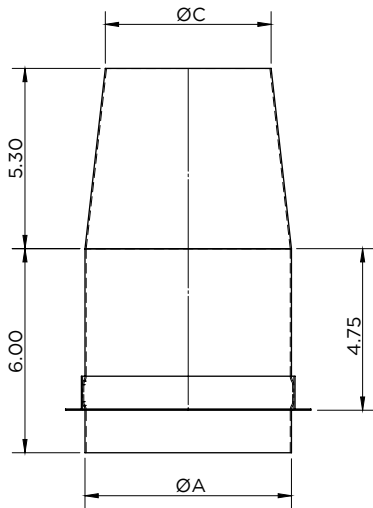
High Temperature Insulated Thimble / DWKLØ-HTT



Ø	B	ØC	ØD	E
6	8.5	9	11.5	15.5
7	9.5	10	12.5	16.5
8	10.5	11	13.5	17.5
9	11.5	12	14.5	18.5
10	12.5	13	15.5	19.5
11	13.5	14	16.5	20.5
12	14.5	15	17.5	21.5
13	15.5	16	18.5	22.5
14	16.5	17	19.5	23.5
16	18.5	19	21.5	25.5
18	20.5	21	23.5	27.5
20	22.5	23	25.5	29.5
22	24.5	25	27.5	31.5
24	26.5	27	29.5	33.5
26	28.5	29	31.5	35.5
28	30.5	31	33.5	37.5
30	32.5	33	35.5	39.5
32	34.5	35	37.5	41.5
34	36.5	38	39.5	43.5
36	38.5	39	41.5	45.5

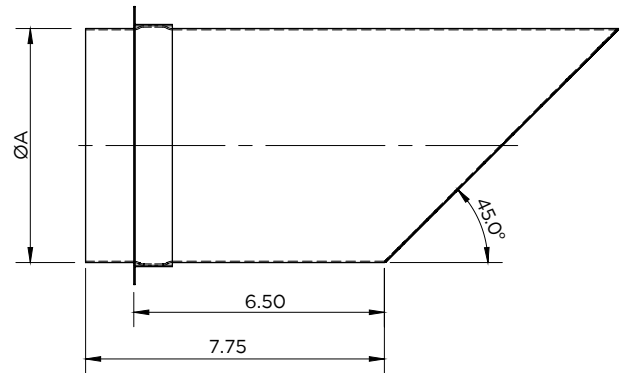
# TERMINATIONS

Exit Cone / SWFLØ-EC



Ø	ØA	ØC
6	6	4.87
7	7	5.69
8	8	6.5
9	9	7.31
10	10	8.12
11	11	8.94
12	12	9.75
13	13	10.56
14	14	11.37
16	16	13
18	18	14.62
20	20	16.25
22	22	16.25
24	24	19.5
26	26	21.12
28	28	22.75
30	30	24.37
32	32	26
34	34	27.62
36	36	29.25

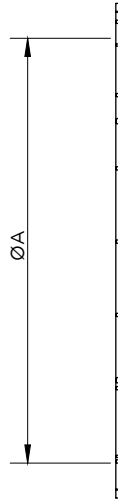
Miter Cut Termination / SWFLØ-MCS



Ø	ØA
6	6
7	7
8	8
9	9
10	10
11	11
12	12
13	13
14	14
16	16
18	18
20	20
22	22
24	24
26	26
28	28
30	30
32	32
34	34
36	36

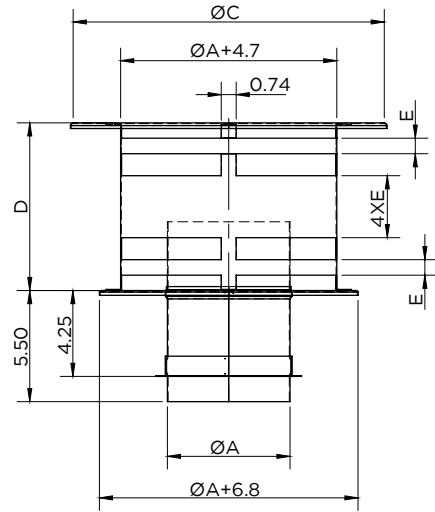
# TERMINATIONS

## Opened Termination with Screen / SWFLØ-OTS



Ø	ØA
6	6
7	7
8	8
9	9
10	10
11	11
12	12
13	13
14	14
16	16
18	18
20	20
22	22
24	24
26	26
28	28
30	30
32	32
34	34
36	36

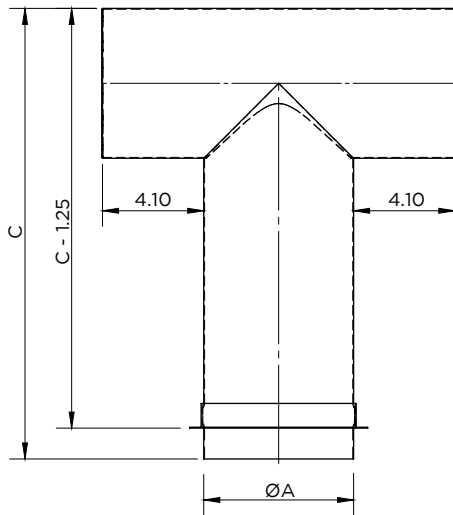
## High Wind Rain Cap / SWFLØ-WRC



Ø	ØA	ØC	D	E
6	6	15.4	8.5	0.77
7	7	17.3	9	0.85
8	8	20	9.5	0.9
9	9	22	10	0.96
10	10	24	10.8	1.05
11	11	26	11.3	1.11
12	12	28	11.80	1.1
13	13	30	12	1.13
14	14	31.5	12.5	1.19
16	16	35	13	1.25
18	18	37	13.2	1.29
20	20	39	13.5	1.33
22	22	41	14	1.39
24	24	44	14.3	1.43
26	26	47	14.6	1.43
28	28	50	15	1.48
30	30	52	15.3	1.52
32	32	55	15.8	1.58
34	34	58	16.2	1.62
36	36	61	16.7	1.68

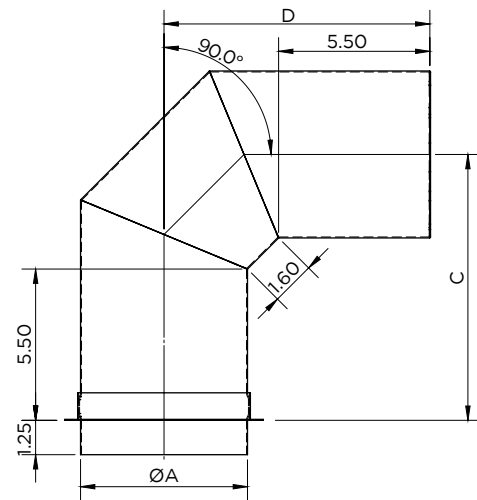
# TERMINATIONS

Tee Termination w/Screen / SWFLØ-90TT



Ø	ØA	C
6	6	18.25
7	7	19.25
8	8	20.25
9	9	21.25
10	10	22.25
11	11	23.25
12	12	24.25
13	13	25.25
14	14	26.25
16	16	28.25
18	18	30.25
20	20	32.25
22	22	34.25
24	24	36.25
26	26	38.25
28	28	40.25
30	30	42.25
32	32	44.25
34	34	46.25
36	36	48.25

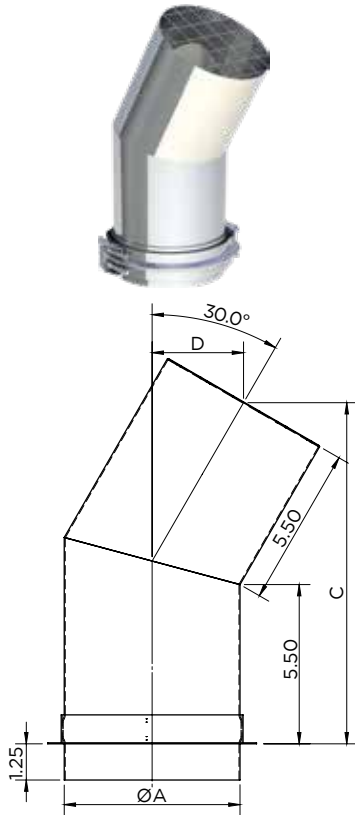
90° Elbow Termination with Screen / SWFLØ-90ET



Ø	ØA	C	D
6	6	9.67	9.67
7	7	10.17	10.17
8	8	10.67	10.67
9	9	11.17	11.17
10	10	11.67	11.67
11	11	12.17	12.17
12	12	12.67	12.67
13	13	13.17	13.17
14	14	13.67	13.67
16	16	14.67	14.67
18	18	15.67	15.67
20	20	16.67	16.67
22	22	17.67	17.67
24	24	18.67	18.67
26	26	19.67	19.67
28	28	20.67	20.67
30	30	21.67	21.67
32	32	22.67	22.67
34	34	23.67	23.67
36	36	24.67	24.67

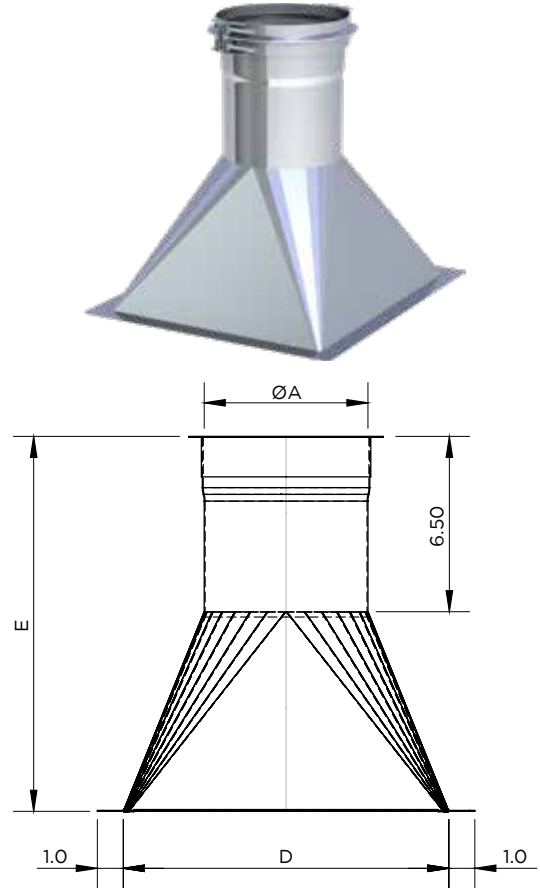
# TERMINATIONS

30° Elbow Termination with Screen / SWFLØ-30ET

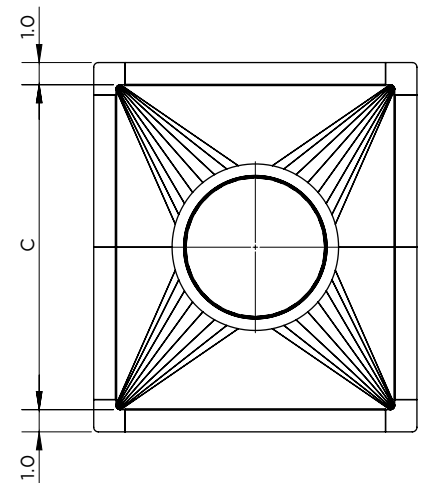


Ø	ØA	C	D
6	6	11.78	3.16
7	7	12.03	3.22
8	8	12.28	3.29
9	9	12.53	3.36
10	10	12.78	3.43
11	11	13.03	3.49
12	12	13.28	3.56
13	13	13.53	3.63
14	14	13.78	3.69
16	16	14.28	3.83
18	18	14.78	3.96
20	20	15.28	4.09
22	22	15.78	4.23
24	24	16.28	4.36
26	26	16.78	4.5
28	28	17.28	4.63
30	30	17.78	4.76
32	32	18.28	4.9
34	34	18.78	5.03
36	36	19.28	5.17

Transition to Round - Start / SWFLØ-STR

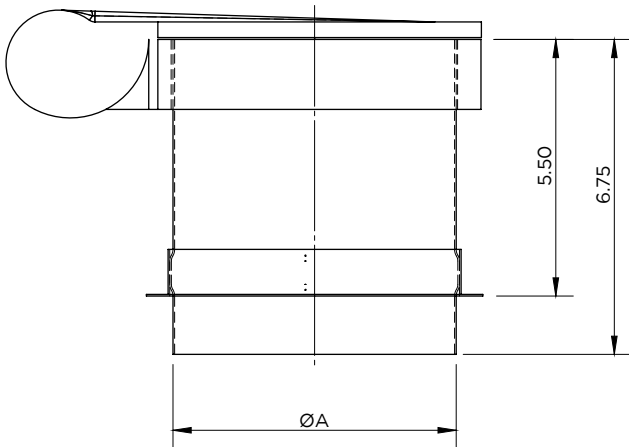


Ø	ØA	C	D	E
6	6			
7	7			
8	8			
9	9			
10	10			
11	11			
12	12			
13	13			
14	14			
16	16			
18	18			
20	20			
22	22			
24	24			
26	26			
28	28			
30	30			
32	32			
34	34			
36	36			



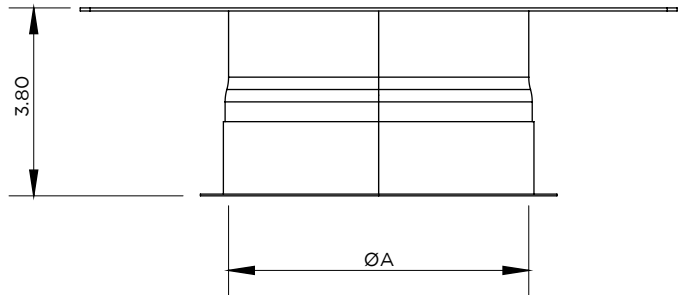
# TERMINATIONS

Engine Flip Top / SWFLØ-EFT



Ø	ØA
6	6
7	7
8	8
9	9
10	10
11	11
12	12
13	13
14	14
16	16
18	18
20	20
22	22

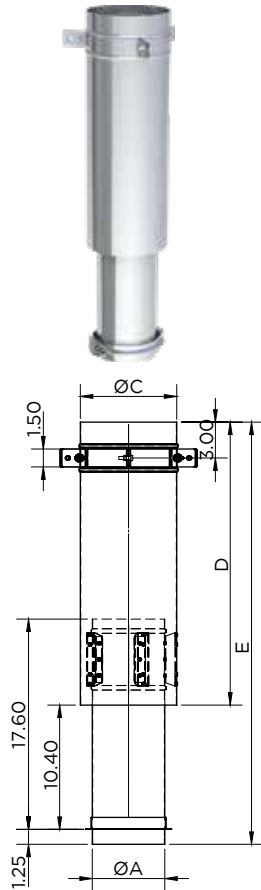
Fan plate adapter / SWFLØ-FP



Ø	ØA
6	6
7	7
8	8
9	9
10	10
11	11
12	12
13	13
14	14
16	16
18	18
20	20
22	22
24	24
26	26
28	28
30	30
32	32
34	34
36	36

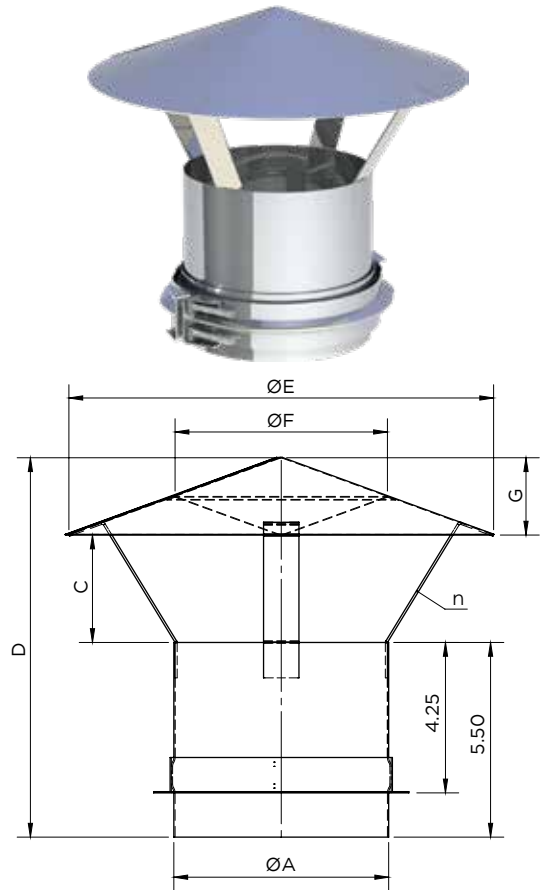
# TERMINATIONS

No-Loss Weather Head / SWFLØ-NLWH



Ø	ØA	ØC	D	E
6	6	8.07	23.69	35.34
7	7	9.07	27.69	39.34
8	8	10.07	31.69	43.34
9	9	12.07	39.44	51.09
10	10	14.07	47.44	59.09
11	11	15.07	47.44	59.09
12	12	16.07	52.94	64.59
13	13	17.07	52.94	64.59
14	14	18.07	61.94	73.59
16	16	20.07		82.59
18	18	22.07		82.59
20	20	24.07	70.94	82.59
22	22	26.07		82.59
24	24	28.07		82.59
26	26	30.07		84.59
28	28	32.07	72.94	84.59
30	30	34.07		84.59
32	32	36.07		84.59
34	34	38.07	73.94	85.59
36	36	40.07	73.94	85.59

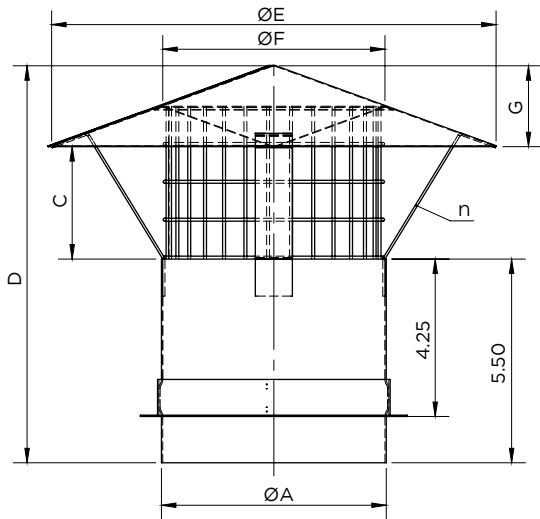
Stack Cap / SWFLØ-SCN



Ø	ØA	C	D	ØE	ØF	G
6	6	3.04	10.72	12	6	2.18
7	7	3.53	11.95	16	8	2.91
8	8	4.04	12.45	16	8	2.91
9	9	4.53	13.67	20	10	3.64
10	10	5.03	14.17	20	10	3.64
11	11	5.54	15.77	26	13	4.73
12	12	6.03	16.27	26	13	4.73
13	13	6.54	16.77	26	13	4.73
14	14	7.03	18.36	32	16	5.82
16	16	8.04	19.36	32	16	5.82
18	18	9.04	21.09	36	18	6.55
20	20	10.04	22.81	40	20	7.28
22	22	11.03	24.54	44	22	8.01
24	24	12.03	26.27	48	24	8.74
26	26	13.04	28	52	26	9.46
28	28	14.04	29.73	56	28	10.19
30	30	15.04	31.45	60	30	10.92
32	32	16.03	33.18	64	32	11.65
34	34	17.03	34.91	68	34	12.37
36	36	18.03	36.64	72	36	13.1

# TERMINATIONS

Stack Cap with Screen / SWFLØ-SCS

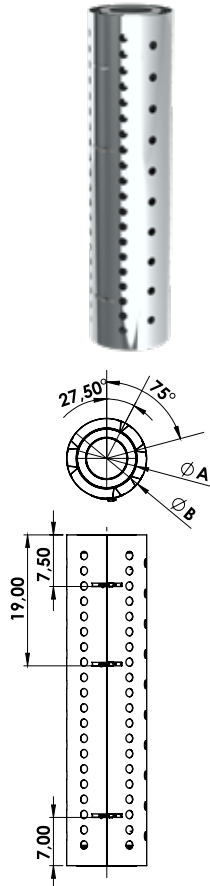


Ø	ØA	C	D	ØE	ØF	G
6	6	3.04	10.72	12	6	2.18
7	7	3.53	11.95	16	8	2.91
8	8	4.04	12.45	16	8	2.91
9	9	4.53	13.67	20	10	3.64
10	10	5.03	14.17	20	10	3.64
11	11	5.54	15.77	26	13	4.73
12	12	6.03	16.27	26	13	4.73
13	13	6.54	16.77	26	13	4.73
14	14	7.03	18.36	32	16	5.82
16	16	8.04	19.36	32	16	5.82
18	18	9.04	21.09	36	18	6.55
20	20	10.04	22.81	40	20	7.28
22	22	11.03	24.54	44	22	8.01
24	24	12.03	26.27	48	24	8.74
26	26	13.04	28	52	26	9.46
28	28	14.04	29.73	56	28	10.19
30	30	15.04	31.45	60	30	10.92
32	32	16.03	33.18	64	32	11.65
34	34	17.03	34.91	68	34	12.37
36	36	18.03	36.64	72	36	13.1



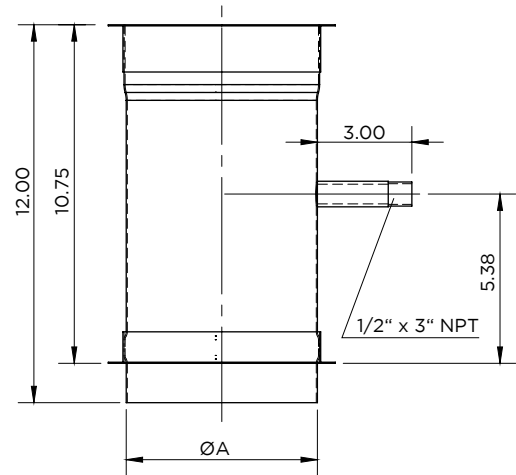
# ACCESSORIES

## Heat Shield for DWFL / HSDW



Ø	ØA	ØB	t	Sq. In. Opening	Standoffs
6	8.5	Ø A + 3"	0.025	124.3	9
7	9.5			158.2	
8	10.5			158.2	
9	11.5			192.1	
10	12.5			192.1	
11	13.5			192.1	
12	14.5			226	
13	15.5			226	
14	16.5			259.9	
16	18.5	293.8	12		
18	20.5	293.8			
20	22.5	327.7			
22	24.5	361.6			
24	26.5	361.6			
26	28.5				
28	30.5				
30	32.5				
32	34.5				
34	36.5				
36	38.5				

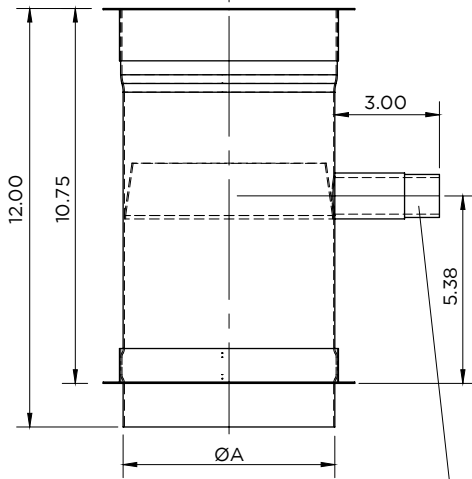
## Test and Nozzle Port Length / SWFLØ-TPL



Ø	ØA
6	6
7	7
8	8
9	9
10	10
11	11
12	12
13	13
14	14
16	16
18	18
20	20
22	22
24	24
26	26
28	28
30	30
32	32
34	34
36	36

# ACCESSORIES

## Universal Drain Length / SWFLØ-UDL

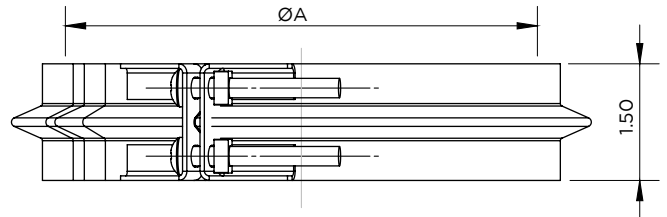


Ø5-Ø24: 1" x 3" NPT  
 Ø26-Ø36: 2" x 3" NPT

Ø	ØA
6	6
7	7
8	8
9	9
10	10
11	11
12	12
13	13
14	14
16	16
18	18
20	20
22	22
24	24
26	26
28	28
30	30
32	32
34	34
36	36

Includes Locking Band with gear Clamp.

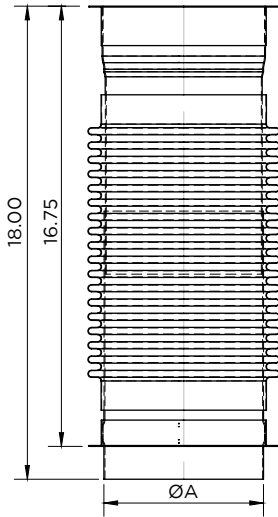
## Vee Band / SWFLØ-VB



Ø	ØA
6	6
7	7
8	8
9	9
10	10
11	11
12	12
13	13
14	14
16	16
18	18
20	20
22	22
24	24
26	26
28	28
30	30
32	32
34	34
36	36

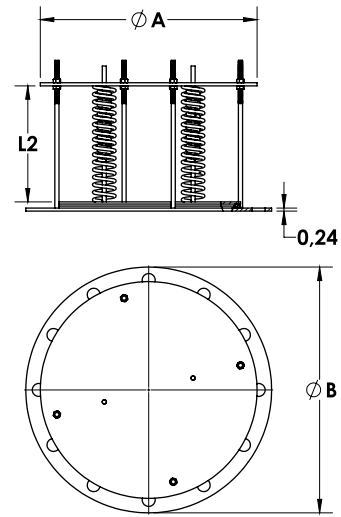
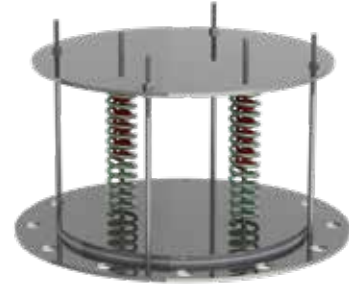
# ACCESSORIES

18" Lined Bellows Length / SWFLØ-LBL



Ø	ØA
6	6
7	7
8	8
9	9
10	10
11	11
12	12
13	13
14	14
16	16
18	18
20	20
22	22
24	24
26	26
28	28
30	30
32	32
34	34
36	36

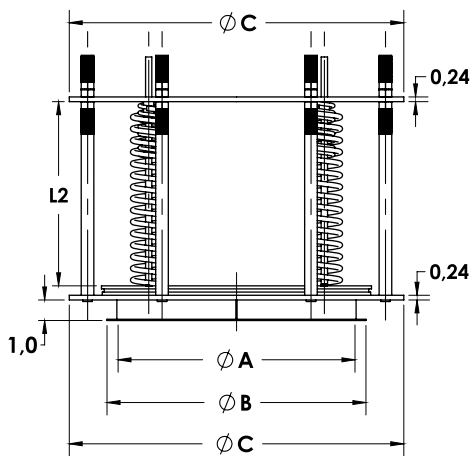
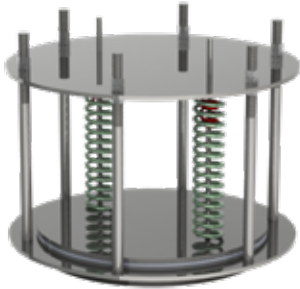
Pressure Relief Valve ANSI Flange / SWKLØ-PRV



Ø	ØA	ØB	L2
3	6.5	7.5	10.69
4	7.5	9	10.48
5	8.5	10	10.20
6	9.5	11	9.86
8	12.5	13.5	9.06
10	14	16	7.97
12	16.5	19	8.89
14	18.5	21	8.45
16	20.5	23.5	8.79
18	22.5	25	8.20
20	24.5	27.5	7.53
24	28.5	32	7.26

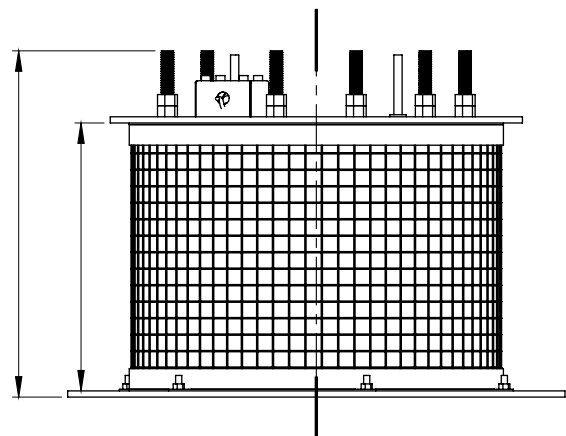
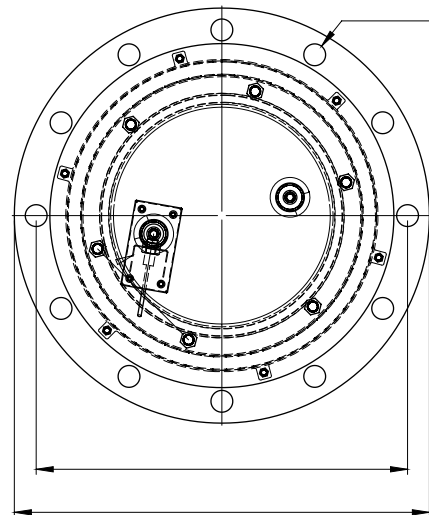
# ACCESSORIES

Pressure Relive Valve with Rolled Flange / SWKLØ-PRVR



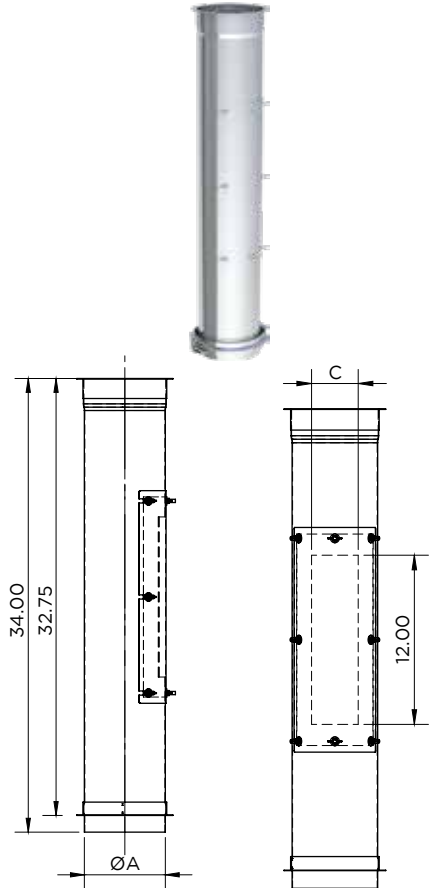
Ø	ØA	ØB	ØC	L2
3	3	4	6.5	10.69
4	4	5	7.5	10.48
5	5	6	8.5	10.20
6	6	7	9.5	9.86
8	8	9	12.5	9.06
10	10	11	14	7.97
12	12	13	16.5	8.89
14	14	15	18.5	8.45
16	16	17	20.5	8.79
18	18	19	22.5	8.20
20	20	21	24.5	7.53
24	24	25	28.5	7.26

Flame Retardant Pressure Relive Valve / SWKLØ-PRVF



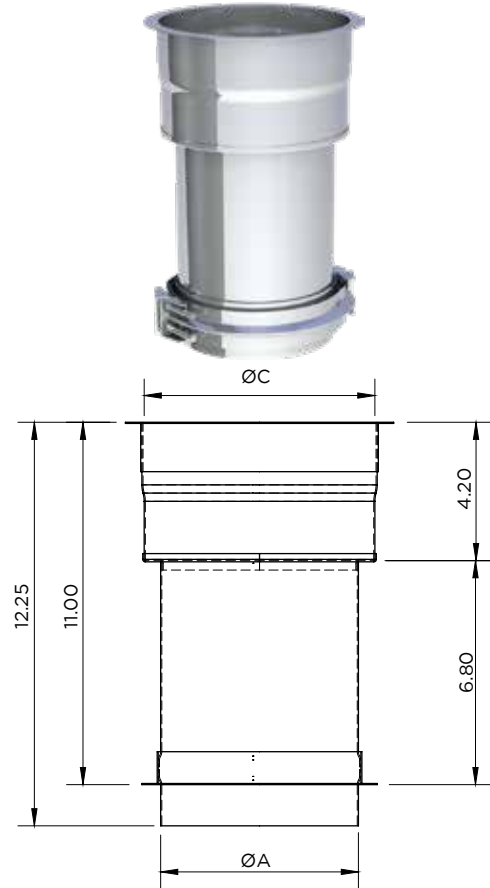
# ACCESSORIES

## Inline Access Door Length / SWFLØ-IAD



Ø	ØA	ØC
6	6	3.3
7	7	3.3
8	8	3.4
9	9	3.4
10	10	5.5
11	11	5.5
12	12	5.5
13	13	5.5
14	14	5.7
16	16	5.7
18	18	5.8
20	20	8.7
22	22	8.8
24	24	8.8
26	26	10.7
28	28	10.8
30	30	10.8
32	32	13.7
34	34	13.8
36	36	13.8

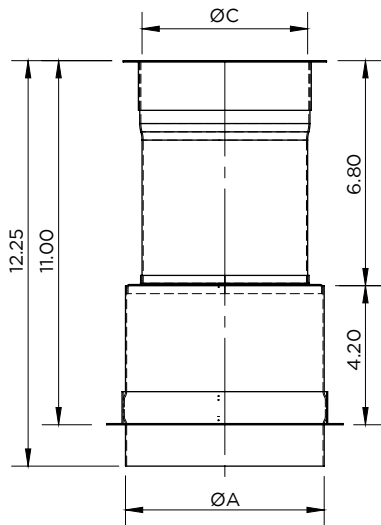
## Stepped Increaser / SWFLØ-SI



Ø	ØA	C
6	6	Customer Dimension
7	7	
8	8	
9	9	
10	10	
11	11	
12	12	
13	13	
14	14	
16	16	
18	18	
20	20	
22	22	
24	24	
26	26	
28	28	
30	30	
32	32	
34	34	
36	36	

# ACCESSORIES

Stepped Reducer / SWFLØ-SR



Ø	ØA	C
6	6	Customer Dimension
7	7	
8	8	
9	9	
10	10	
11	11	
12	12	
13	13	
14	14	
16	16	
18	18	
20	20	
22	22	
24	24	
26	26	
28	28	
30	30	
32	32	
34	34	
36	36	



## PRODUCTION SITES

### USA

Jeremias Inc.  
983 Industrial Park Drive  
Marietta, GA 30062, USA  
phone: +1 678 388 2740  
e-mail: [info@jeremiasinc.com](mailto:info@jeremiasinc.com)  
[www.jeremiasinc.com](http://www.jeremiasinc.com)

### GERMANY

[www.jeremias.de](http://www.jeremias.de)

### POLAND

[www.jeremias.pl](http://www.jeremias.pl)

### SPAIN

[www.jeremias.com.es](http://www.jeremias.com.es)

### RUSSIA

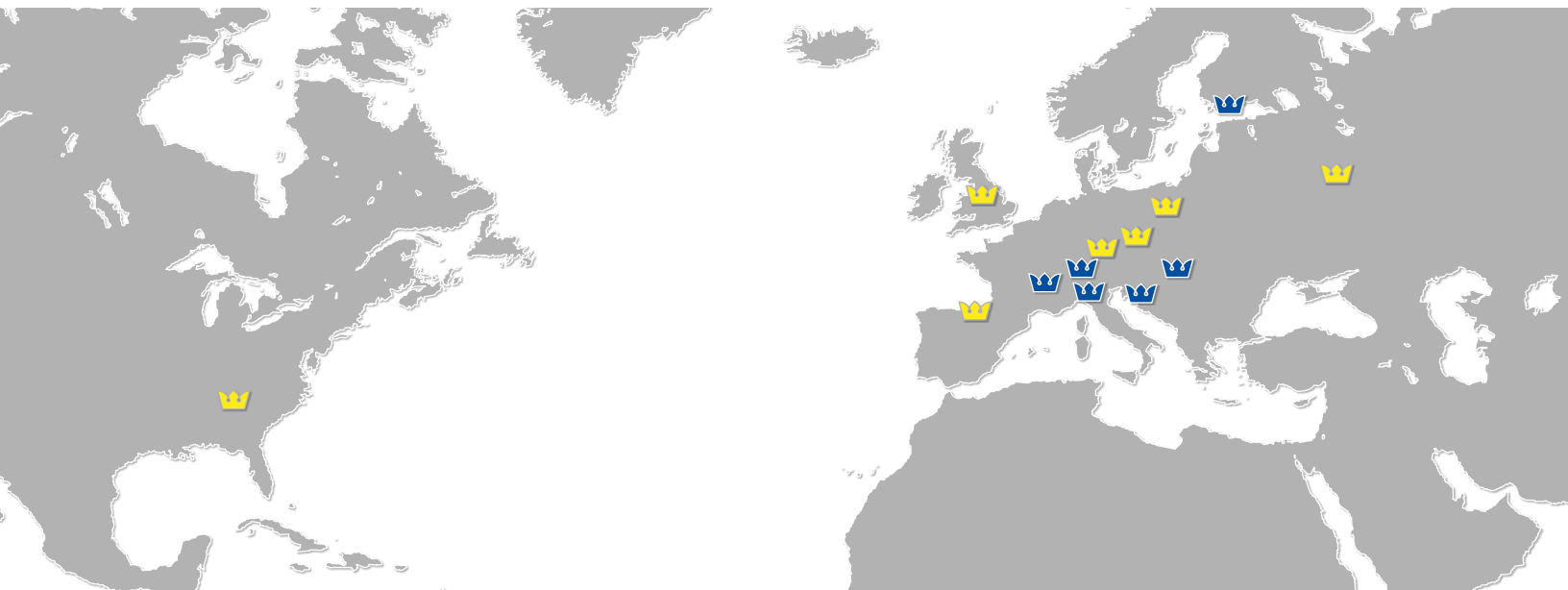
[www.jeremias.ru](http://www.jeremias.ru)

### CZECH REPUBLIC

[www.jeremias.cz](http://www.jeremias.cz)

### UNITED KINGDOM

[www.jeremias.uk](http://www.jeremias.uk)



## SALES OFFICES

### FRANCE

[www.jeremias-france.fr](http://www.jeremias-france.fr)

### HUNGARY

[www.jeremias.hu](http://www.jeremias.hu)

### CROATIA

[www.jeremias.hr](http://www.jeremias.hr)

### FINLAND

[www.jeremias.fi](http://www.jeremias.fi)

### SWITZERLAND

[www.jeremias-schweiz.ch](http://www.jeremias-schweiz.ch)

### ITALY

[www.jeremias.it](http://www.jeremias.it)

## JEREMIAS IS REPRESENTED IN THE FOLLOWING COUNTRIES:

Austria | Belarus | Belgium | Bulgaria | Brazil | Denmark | Estonia | Hong Kong | Ireland | Kazakhstan | Latvia | Lithuania | Luxembourg | Malta | Netherlands | Norway | Portugal | Romania | Saudi Arabia | Serbia | Singapore | Slovakia | Slovenia | South Africa | Sweden | Tunisia | UAE | Ukraine

The expert in your area:

Jeremias high quality products to be installed only by selected experts.