



SYSTEM | DW-POWER

Double wall pressure-tight exhaust system for engines and emergency standby power systems (Maritime applications)

NEW TECHNOLOGY!

- Weight savings
- Space savings
- Cost savings



CE-CERTIFICATE NUMBER

0036 CPR 9174 085
0036 CPR 9174 088

CE-CLASSIFICATION ACC. TO DIN EN 1856-1

T600 - H1 - D - V2 - L50050 - 0xx

CE-CLASSIFICATION ACC. TO DIN EN 1856-2

T600 - H1 - D - V2 - L50050 - 0100M
T600 - H1 - D - V2 - L99050 - 0100M

MARINE APPROVALS

DNV-GL Certification
ABS, PDA Type Approval

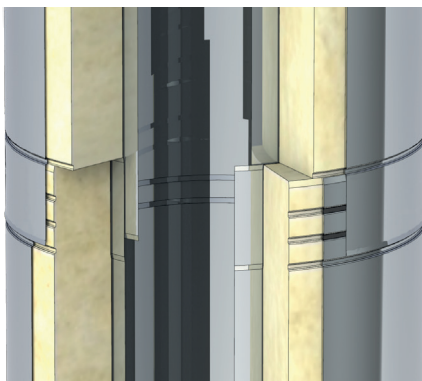
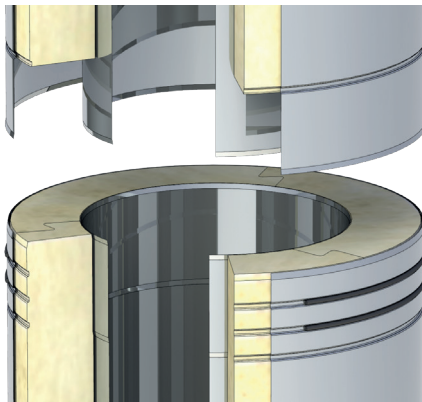


xx = distances from combustible materials are Ø-dependent, see the declaration of performance



SYSTEM DW-POWER

DOUBLE-WALLED, PRESSURE-TIGHT STAINLESS STEEL EXHAUST SYSTEM



DESCRIPTION

Double-walled, pressure-tight stainless steel exhaust system with gaskets in the outer casing, which allows stress-free thermal expansion of the inner tube hence no compensators needed.

MATERIAL

Outside: 1.4301 (AISI 304), Optional 1.4404 (AISI 316L)
Inside: 1.4404 (AISI 316L)

SURFACE

Highly polished

WALL THICKNESS

Inside: 0.5 mm (0.020"), Outside: 0.60 mm (0.024")

INNER DIAMETER

100 – 600 mm (4" – 24")

INSULATION

Mineral insulation with 57.5 mm (2.25") thickness

CONNECTION

Push-in connection (outer tube)

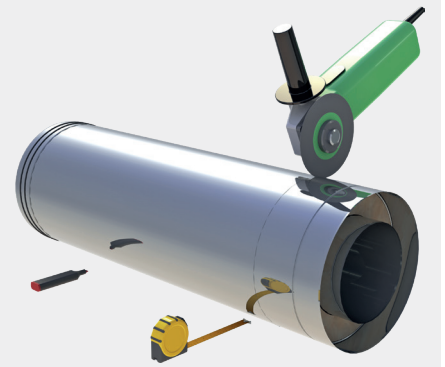
LOCKING BAND / SEAL JOINT

Included

FIELD CUTABLE PIPE LENGTHS

All the pipe lengths of DW-POWER system can be shortened at the socket end (female). The quick and flexible adjustment of the pipe length at the time of installation helps save time and costs.

Every system shipped with insulation cutter (auger) to use a standard drill to cut the insulation back to factory specifications.



USA

Jeremias Inc.

1255 Kennestone Circle
Ste. 150
Marietta, GA 30066
Office: +1 678-388-2740
Fax: +1 678-388-2744
sales@jeremiasinc.com

GERMANY

www.jeremias.de

POLAND

www.jeremias.pl

SPAIN

www.jeremias.com.es

UNITED KINGDOM

www.jeremias.uk

CZECH REPUBLIC

www.jeremias.cz

ITALY

www.jeremias.it

CROATIA

www.jeremias.hr

FRANCE

www.jeremias-france.fr

FINLAND

www.jeremias.fi

JEREMIAS IS REPRESENTED IN THE FOLLOWING COUNTRIES:

Austria | Belarus | Belgium | Bulgaria | Brazil | Denmark | Estonia | Hong Kong | Ireland | Kazakhstan | Latvia | Lithuania | Luxembourg | Malta | Netherlands | Norway | Portugal | Romania | Saudi Arabia | Serbia | Singapore | Slovakia | Slovenia | South Africa | Sweden | Tunisia | UAE | Ukraine

Jeremias high quality products to be installed only by selected experts.

The expert in your area: